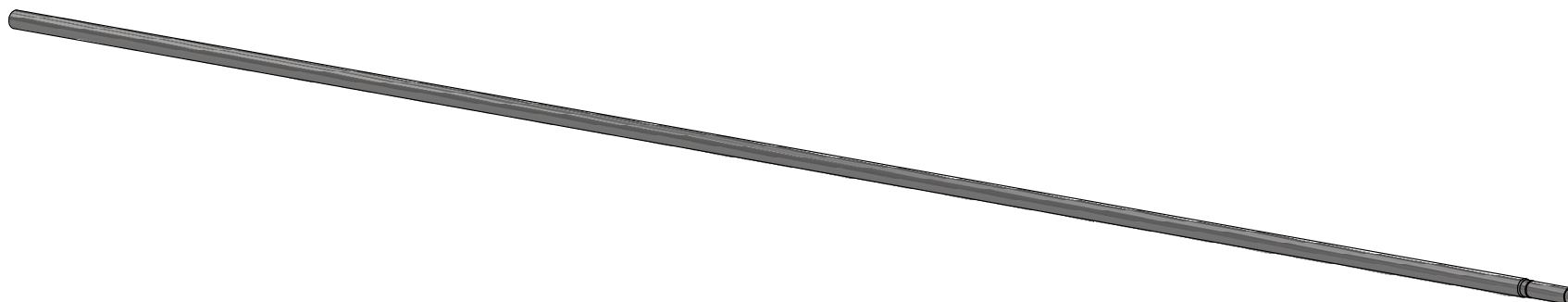


GALVANIZED SUPPORT PIPE SPECIFICATIONS:

SCALE: 10%

1. OUTSIDE DIAMETER (O.D.): 1.050 in (\pm 0.005 in) OR 26.90 mm (+ 0.30 mm)
2. WALL THICKNESS: 19 GAUGE OR 1.00 mm (MINIMUM ACCEPTABLE WALL: 0.037 in OR 0.94 mm)
3. ASTM - A513 OR EQUIVALENT STANDARD
4. SWAGE ELEMENT COAXIAL OR CONCENTRIC TO THE REMAINDER OF THE PIPE
5. BOW TOLERANCE: 0.31 in OR 0.80 mm PER 3 FEET OR 1 METER SECTION
6. G60 COATING OR BETTER
7. ENDS DEBURRED AND PAINTED WITH A POLYESTER-BASED POLYMER CONTAINING ZINC OXIDE



SUPPORT PIPE: GALVANIZED 1.050" X 10 FT

PART NR.:

DATE: 03-28-01

REVISION: 7

146