

**RISER ASSEMBLY KEY:**

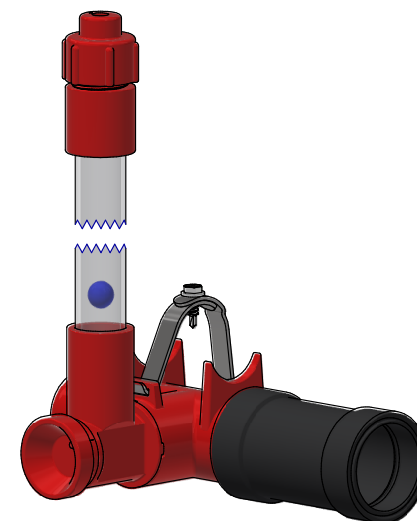
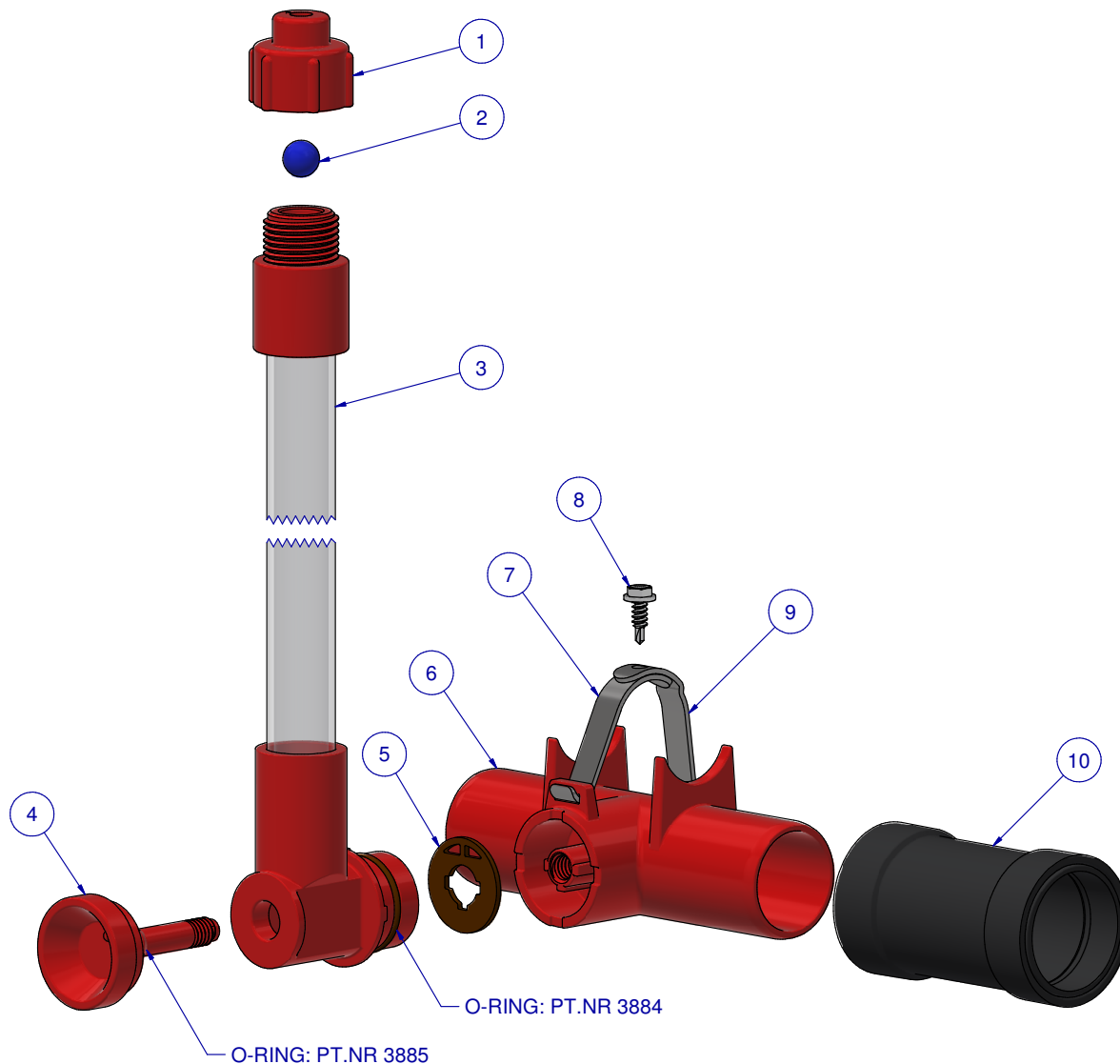
**NUVO** = RISER ASSEMBLY INLINE & ENDLINE

**RIGID** = RIGID RISER TUBE

**FLEX** = FLEXIBLE RISER TUBE

**APA** = ACE PIPE ADAPTER

| ITEM | PART NR. | QTY | DESCRIPTION  |
|------|----------|-----|--|
| 1    | 3888     | 1   | RISER ASSEMBLY PART: CAP ASSEMBLY                    |
| 2    | 147      | 1   | BALL: RISER TUBE                                     |
| 3    | 3889     | 1   | RISER ASSEMBLY PART: RISER UNIT - 24"/60 CM          |
| 4    | 3891     | 1   | RISER ASSEMBLY PART: HAND KNOB                       |
| 5    | 3883     | 1   | RISER ASSEMBLY PART: GASKET                          |
| 6    | 3879     | 1   | RISER ASSEMBLY PART: RIGID BASE - NUVO               |
| 7    | 3894     | 1   | RISER ASSEMBLY PART: STABILIZING BRACKET - FRONT     |
| 8    | 2537     | 1   | FASTENER: SCREW HEX WHD SELF TAPPING #8-18 X 1/2" LG |
| 9    | 3895     | 1   | RISER ASSEMBLY PART: STABILIZING BRACKET - REAR      |
| 10   | 896      | 1   | PIPE CONNECTOR: BIG ACE / BIG Z - BLACK              |



RISER ASSEMBLY: NUVO RIGID ENDLINE - 24"/60 CM RISER

PART NR.:

DATE: 03-19-20

REVISION: 1

3972