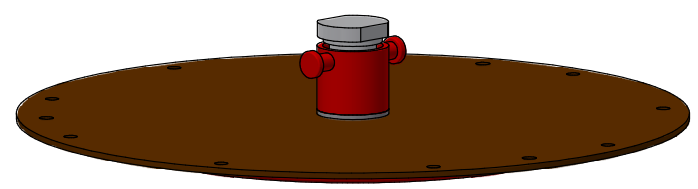
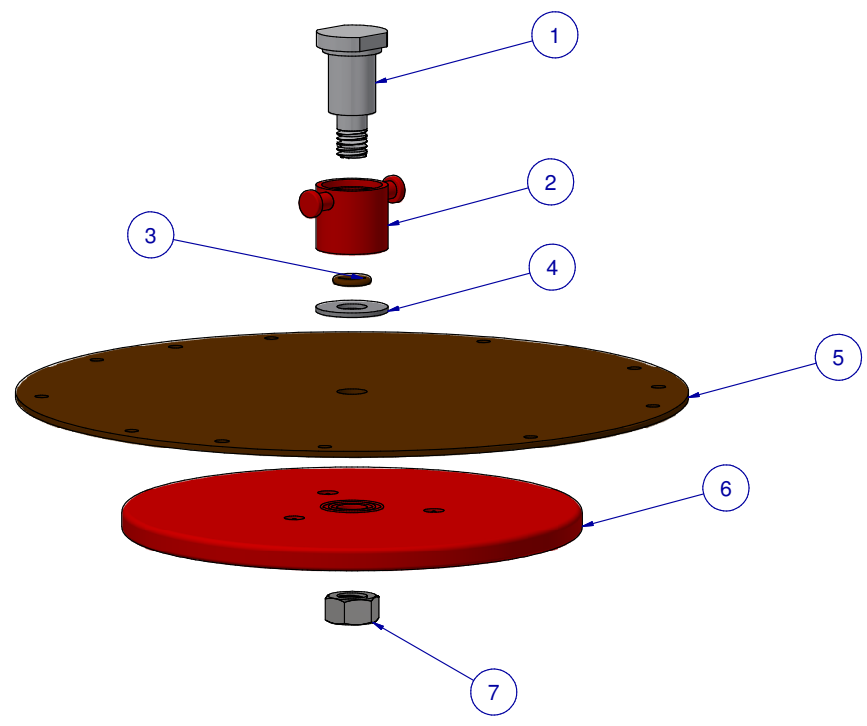


ITEM	PART NR.	QTY	DESCRIPTION
1	92	1	REGULATOR ASSEMBLY PART: SHOULDER BOLT - STANDARD
2	91	1	REGULATOR ASSEMBLY PART: SWIVEL COUPLING - STANDARD
3	4103	1	O-RING: 6.40MM ID X 10.21MM OD X 1.90MM CS - ECR
4	157	1	WASHER: METAL - 5/16" ID X 3/4" OD X 0.044" TH
5	2941	1	REGULATOR ASSEMBLY PART: DIAPHRAGM - ECR
6	97	1	REGULATOR ASSEMBLY PART: DIAPHRAGM BACKING PLATE - STANDARD
7	89	1	FASTENER: NUT HEX 5/16" - 18 X 1/2" WD X 17/64" H



REGULATOR ASSEMBLY PART: DIAPHRAGM ASSEMBLY - STANDARD ECR  
 DATE: 08-09-23 REVISION:

PART NR.:  
**4160**