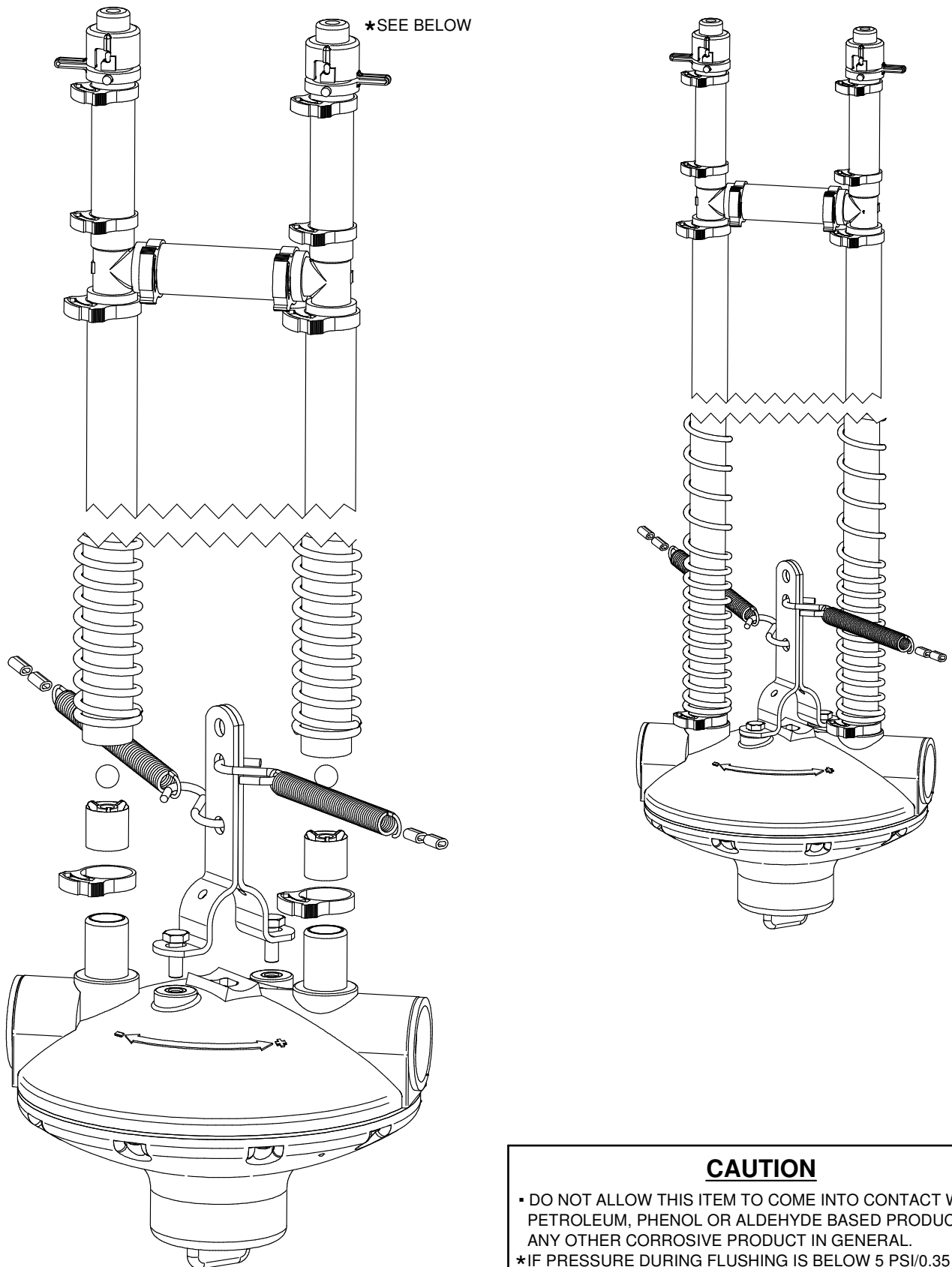


Assembly Instructions



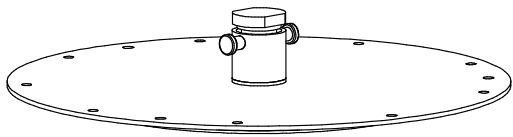
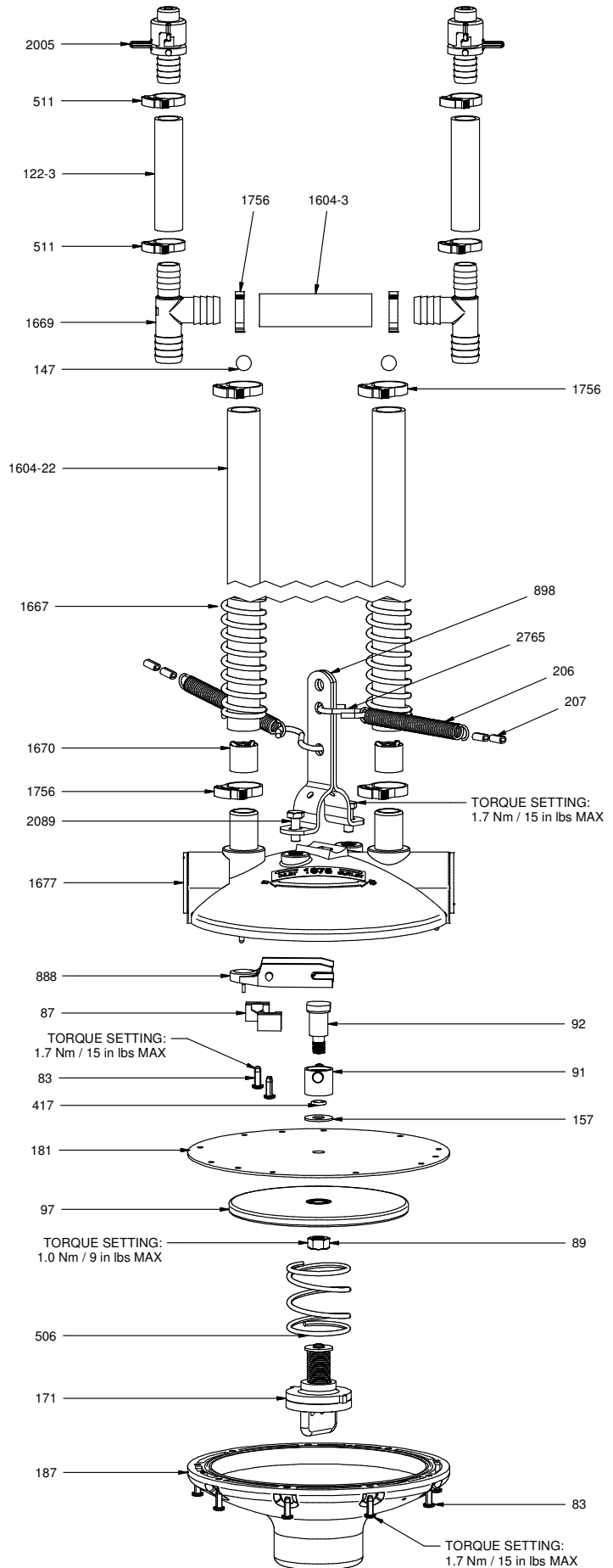
*SEE BELOW

CAUTION

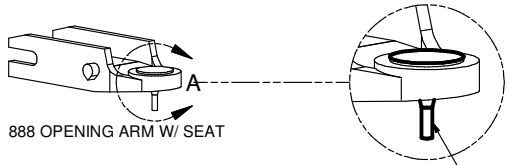
- DO NOT ALLOW THIS ITEM TO COME INTO CONTACT WITH PETROLEUM, PHENOL OR ALDEHYDE BASED PRODUCTS OR ANY OTHER CORROSIVE PRODUCT IN GENERAL.
- *IF PRESSURE DURING FLUSHING IS BELOW 5 PSI/0.35 BAR SEE GL1089

1675 COMPONENTS

PART NR.	QTY	DESCRIPTION
122-3	2	RISER TUBE: 3" / 8 CM
147	2	BALL: RISER TUBE
1604-22	2	REGULATOR PART: RISER TUBE SLOPE REGULATOR 22" / 56 CM
1604-3	1	REGULATOR PART: RISER TUBE SLOPE REGULATOR 3" / 7 CM
1667	2	REGULATOR PART: RISER TUBE SPRING - SLOPE REGULATOR
1669	2	REGULATOR PART: RISER TEE - SLOPE REGULATOR
1670	2	REGULATOR PART: BALL STOP - SLOPE REGULATOR
1677	1	REGULATOR PART: INLET/OUTLET HOUSING - SLOPE
171	1	REGULATOR PART: ADJUSTMENT KNOB ASSEMBLY - STANDARD
187	1	REGULATOR PART: ADJUSTMENT HOUSING - STANDARD & INLINE
157	1	WASHER: METAL - 5/16" ID X 3/4" OD X 0.044" TH
181	1	REGULATOR PART: DIAPHRAGM - STANDARD
417	1	O-RING: 6.40MM ID X 10.21MM OD X 1.90MM CS
89	1	FASTENER: NUT HEX 5/16" - 18 X 1/2" WD X 17/64" H
91	1	REGULATOR PART: SWIVEL COUPLING - STANDARD
92	1	REGULATOR PART: SHOULDER BOLT - STANDARD
97	1	REGULATOR PART: DIAPHRAGM BACKING PLATE - STANDARD
506	1	REGULATOR PART: SPRING 0.05 - 1 PSI
83	11	FASTENER: SCREW PAN HD PHILLIPS #7 - 18 X 1/2" LG - PLASTITE THREAD
87	2	REGULATOR PART: RETAINER BLOCK - STANDARD
888	1	REGULATOR PART: OPENING ARM W/ SEAT
1756	6	CLAMP: SNAP 0.859" - 0.989" DIA. - WHITE
2005	2	RISER TUBE CAP
206	2	SPRING: ANTI-ROOST
207	4	CLIP: ANTI-ROOST CABLE
2089	2	FASTENER: BOLT HEX HD M6 X 1 X 16 LG
2765	2	S-HOOK: ANTI-ROOST CABLE ANCHOR
511	4	CLAMP: SNAP 0.746" - 0.848" DIA. - BLACK
898	1	CLAMP: SUPPORT PIPE TO FLOOR REGULATOR



301 DIAPHRAGM ASSEMBLY - STANDARD



888 OPENING ARM W/ SEAT

88-V CAN BE
PURCHASED
SEPARATELY



Ziggy Systems Inc.
101 Industrial Parkway East
Middlebury Indiana 46540-8549
USA
Tel: + 1 574.825.5849
Fax: + 1 574.825.7674
Web: www.ziggy.com