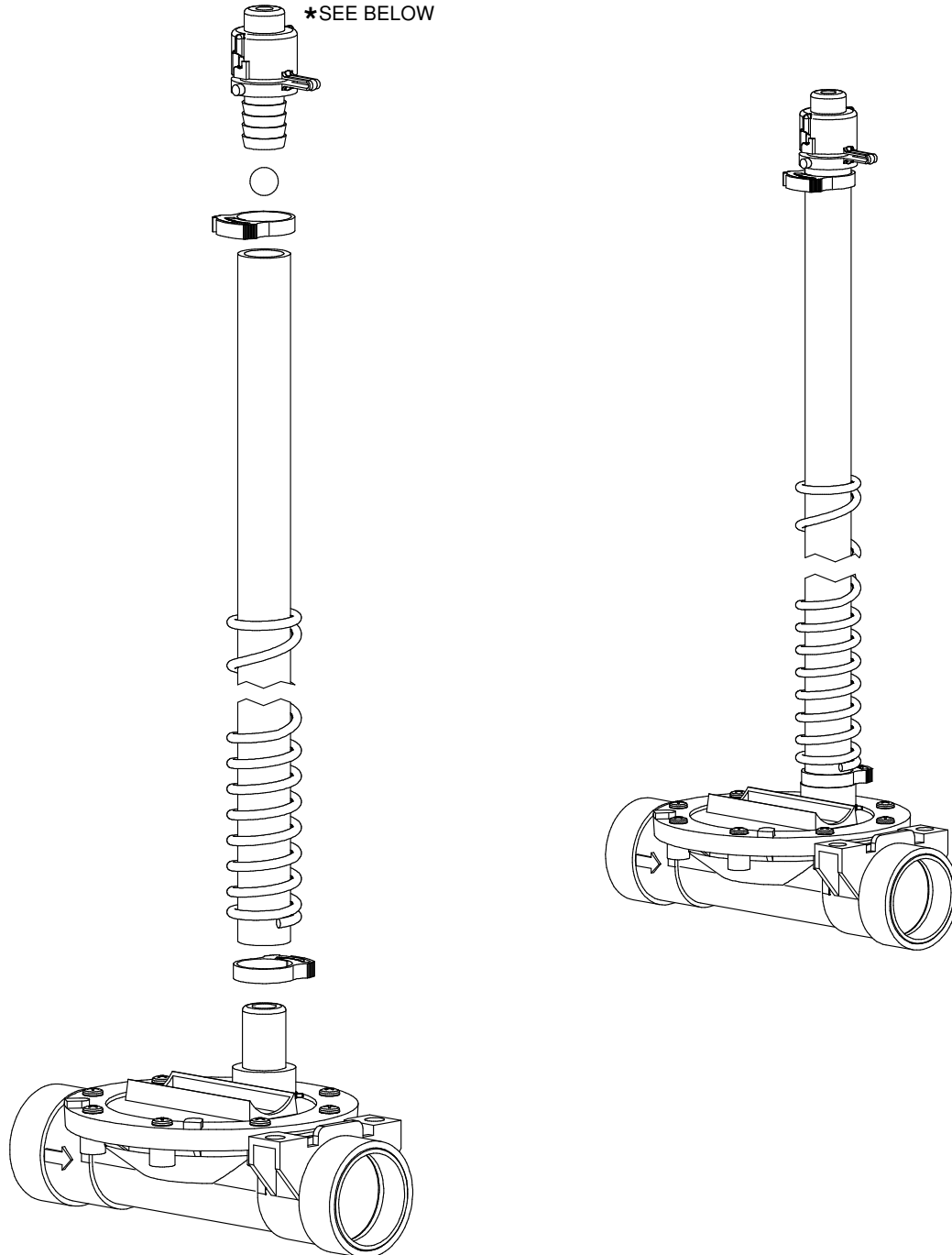


**Assembly Instructions**

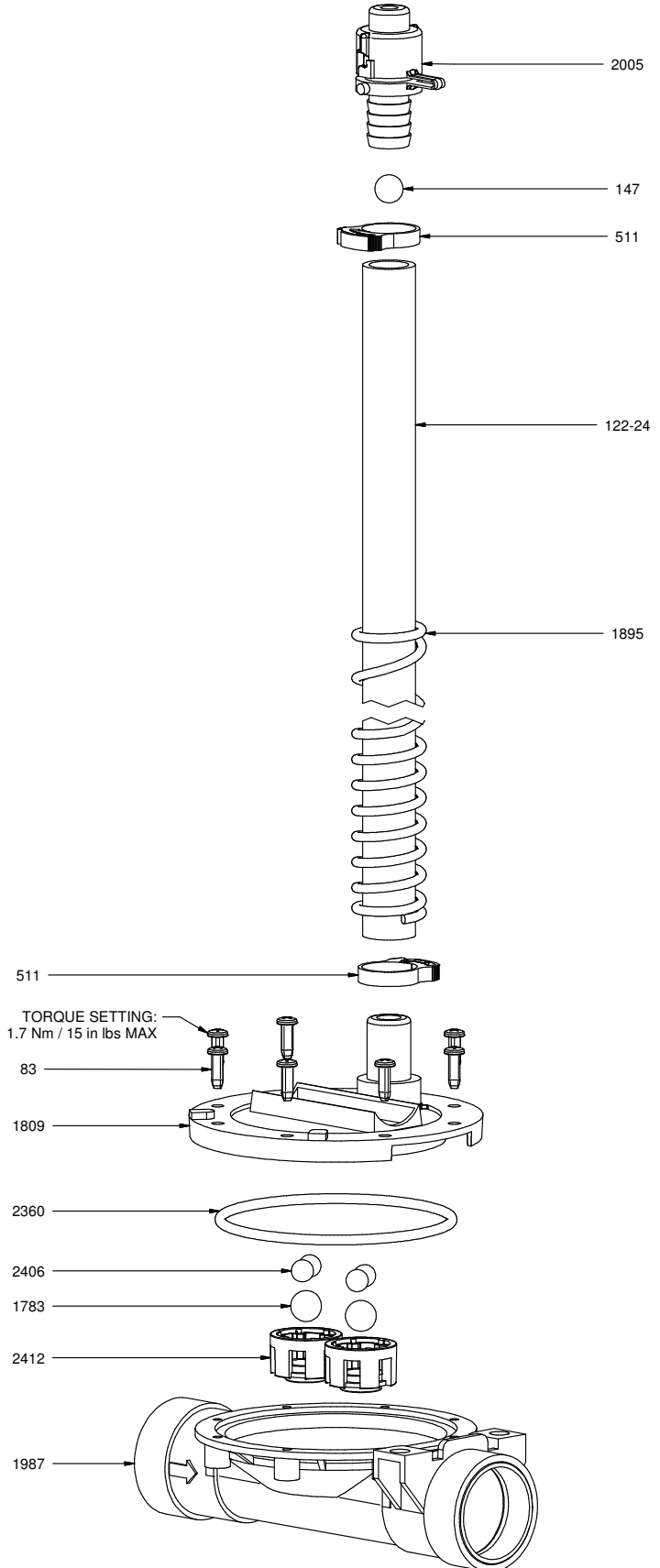
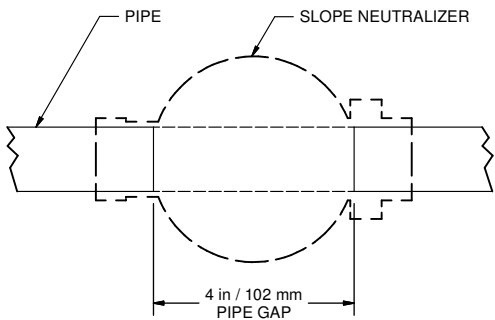
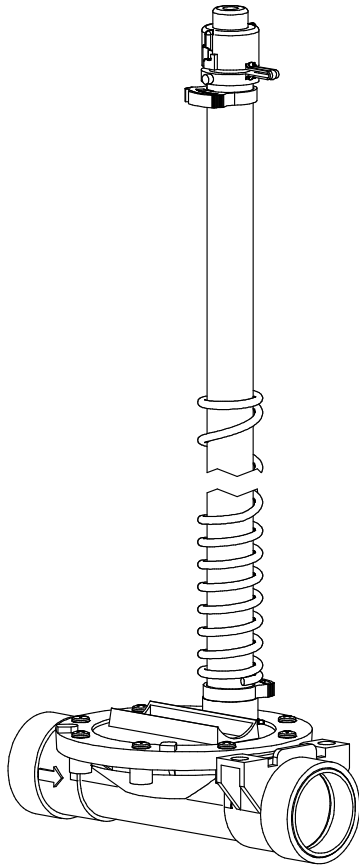


**CAUTION**

- DO NOT ALLOW THIS ITEM TO COME INTO CONTACT WITH PETROLEUM, PHENOL OR ALDEHYDE BASED PRODUCTS OR ANY OTHER CORROSIVE PRODUCT IN GENERAL.
- \*IF PRESSURE DURING FLUSHING IS BELOW 5 PSI/0.35 BAR SEE GL1089

# 1807-6L COMPONENTS

| PART NR. | QTY | DESCRIPTION   |
|----------|-----|---|
| 122-24   | 1   | RISER TUBE: 24" / 60 CM   |
| 147      | 1   | BALL: RISER TUBE  |
| 1895     | 1   | SPRING: RISER TUBE  |
| 1783     | 2   | DRINKER PART: BALL - 7/16" BIG Z                                    |
| 1809     | 1   | SLOPE NEUTRALIZER PART: TOP   |
| 1987     | 1   | SLOPE NEUTRALIZER PART: BODY  |
| 2360     | 1   | O-RING: 3.161" ID X 3.44" OD X 0.139" CS                            |
| 2406     | 4   | SLOPE NEUTRALIZER PART: BALL - 8.0MM                                |
| 2412     | 2   | SLOPE NEUTRALIZER PART: BALL RETAINER                               |
| 83       | 8   | FASTENER: SCREW PAN HD PHILLIPS #7 - 18 X 1/2" LG - PLASTITE THREAD |
| 2005     | 1   | RISER TUBE CAP  |
| 511      | 2   | CLAMP: SNAP 0.746" - 0.848" DIA. - BLACK                            |



**ZIGGY SYSTEMS INC.**

Ziggy Systems Inc.  
101 Industrial Parkway East  
Middlebury Indiana 46540-8549  
USA  
Tel: + 1 574.825.5849  
Fax: + 1 574.825.7674  
Web: www.ziggy.com