

The Poultry Watering Specialists



Installation Manual: Conversion System Floor Application

Superior performance, exceptional durability and easy management.



ZIGGITY SYSTEMS, INC.
STANDARD LIMITED WARRANTY

Ziggity Systems, Inc. ("Ziggity") warrants to the original retail purchaser ("Purchaser") of any Ziggity product ("Product"), sold by an authorized Ziggity distributor, that for one (1) year from the date of original retail purchase, the Product will be free from defects in materials and workmanship that are material in nature. The sole remedy available to Purchaser in the event of such a defect will be the repair or replacement (at Ziggity's sole option) of the materially defective Product, excluding labor. Purchaser will be responsible for the expense of shipping the defective Product to Ziggity and, upon Ziggity's approval of the warranty claim, Ziggity will be responsible for the expense of shipping the repaired or replaced Product to Purchaser. Any Product or Product replacement parts provided by Ziggity under this warranty are only warranted for the remainder of the warranty period for the original Product. Any Product or Product replacement part replaced by Ziggity under this warranty becomes the property of Ziggity. For warranty service, please contact an authorized Ziggity distributor. Alternatively, warranty requests may be sent directly to Ziggity at 101 Industrial Parkway East, Middlebury IN, 46540, USA.

This limited warranty excludes liability for defects in or damage to the Product (both internal and external) caused, directly or indirectly, by misuse, neglect, negligence, alteration, accident, excessive mineral or chemical contact, corrosive chemical use, minerals or sediment in the water, poor quality water, acts of nature or failure to: (A) follow Ziggity's guidelines and recommendations for the Product, (B) follow installation and operating instructions for the Product, (C) use potable and filtered water in and with the Product, or (D) properly maintain the Product. It also excludes used Products or Products acquired from sellers who are not authorized Ziggity distributors. Furthermore, this warranty does not extend to any item that is manufactured by others, including without limitation, items such as: galvanized support pipe, water filters, water meters, sight gauges and proportioners. These items are warranted separately by the original manufacturer, if at all.

Ziggity makes no other representations or warranties of any kind except as expressly stated in this warranty. Implied warranties, if any, arising by state law, including any implied warranties of merchantability or of fitness for a particular purpose, are limited in duration and scope to the terms of this limited warranty. Ziggity disclaims any and all implied warranties, including the warranty of merchantability and the warranty of fitness for a particular purpose, on components and items not covered by this limited warranty. To the fullest extent permitted by applicable law, Ziggity shall not be liable to Purchaser for any consequential, incidental, exemplary, punitive, special, or indirect damages, and Ziggity shall not be liable for any damages that are based on negligence, breach of warranty, or strict liability. Ziggity's liability under this warranty shall in no event exceed the purchase price paid by Purchaser for the defective Product. Some states do not allow limitations on how long an implied warranty lasts or the exclusion or limitation of incidental or consequential damages, so the above exclusions and limitations may not apply fully to you.

Ziggity may from time to time, through its issuance of formal Information Update documents, provide for supplemental warranty coverage in addition to this standard limited warranty for certain products, or may provide for deviations or exclusions from this standard warranty for certain products. If any such supplemental, deviation, or exclusion Information Updates apply to your Product, you will be provided with a copy of such Information Updates at the time of your original retail purchase and the standard limited warranty provided for above will be deemed modified accordingly.

No person, including any dealer, distributor, agent, or other representative of Ziggity, is authorized to make any representation or warranty concerning the Product other than as specifically contained in this standard limited warranty and any Information Update from Ziggity providing for any supplemental warranty coverage or deviation or exclusion from warranty coverage. Ziggity reserves the right to change Product models, make changes to the Product and Product specifications, at any time and without notice or obligation to Purchaser.

[CONTINUES ON NEXT PAGE]

ZIGGITY SYSTEMS, INC.
EXTENDED DRINKER WARRANTY

In addition to its standard limited warranty, Ziggity provides an extended warranty for certain Drinkers manufactured by Ziggity. All other provisions of the standard limited warranty apply to the Extended Drinker Warranty. If any covered Drinker is determined by Ziggity to be defective in materials or workmanship after the expiration of the one (1) year standard warranty period and prior to ten (10) years after the date of the original retail purchase, Ziggity will provide a replacement Drinker or Drinker components, as applicable, to the original retail purchaser at the following discount off of published list/brutto prices:

End User Purchase Date	End User Discount
0 - 36 months	100% (No charge)
37 - 60 months	65%
61 - 120 months	40%

WARNING – AVOID USE WITH OR EXPOSURE TO CORROSIVE PRODUCTS

Do not allow Ziggity products to come into contact with petroleum, phenol or aldehyde based products or any other corrosive product in general. Contact with such corrosive products is likely to result in damage to or failure of the Ziggity product. Additionally, aggressive chlorination and/or acidification programs (greater than 1 ppm and/or pH less than 6) will shorten the life of Ziggity products. Failure to follow this warning will void any otherwise applicable warranty coverage for the Ziggity product when the product is chemically damaged.

The Poultry Watering Specialists



CONTENTS

DRINKERS

Chore-Time®	6
Val-Co/Cumberland®	7
Plasson®	8
Lubing®	9

FLOOR REGULATORS

Aluminium Profile and Ace Pipe	12
Aluminium Profile and 3/4 in PVC Pipe	12
Val-Co® Conduit System	13
Aluminium Profile and 22 mm Square Pipe	14
Plasson® Floor System	15

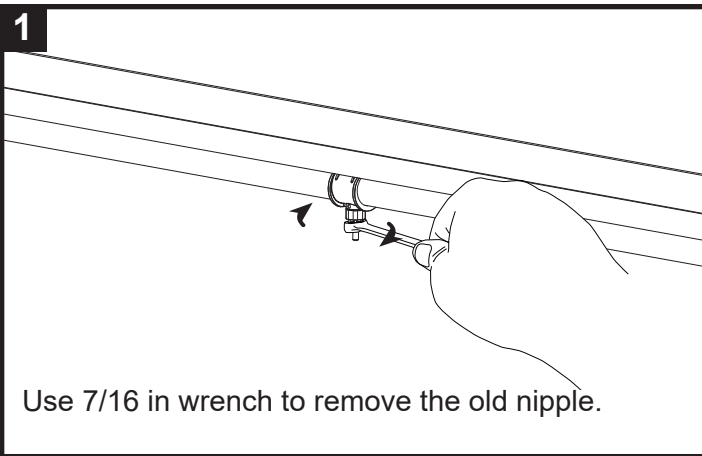
FLOOR END ASSEMBLY

Aluminium Profile and Ace Pipe	18
Aluminium Profile and 3/4 in PVC Pipe	18
Val-Co® Conduit System	19
Aluminium Profile and 22 mm Square Pipe	20
Plasson® Floor System	21

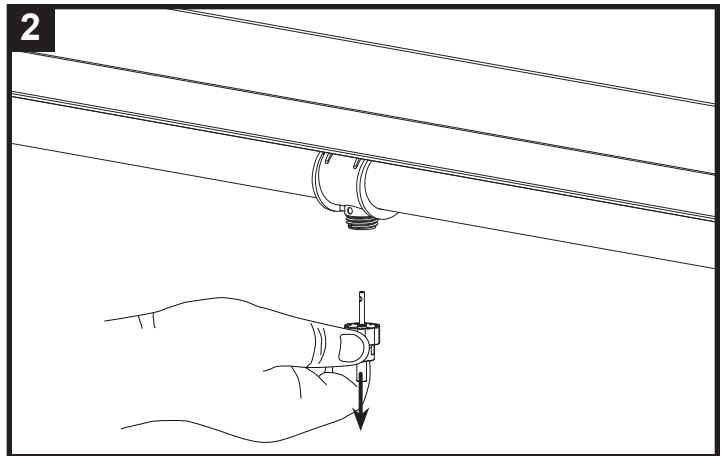
Drinkers

CHORE-TIME® NIPPLE TO ZIGGITY TL DRINKER

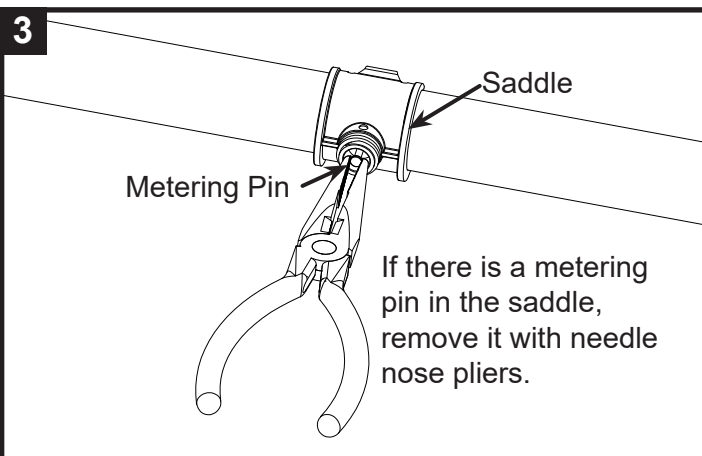
1



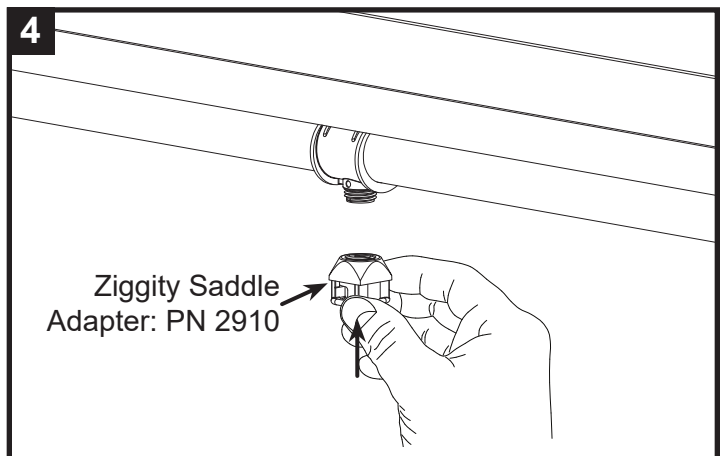
2



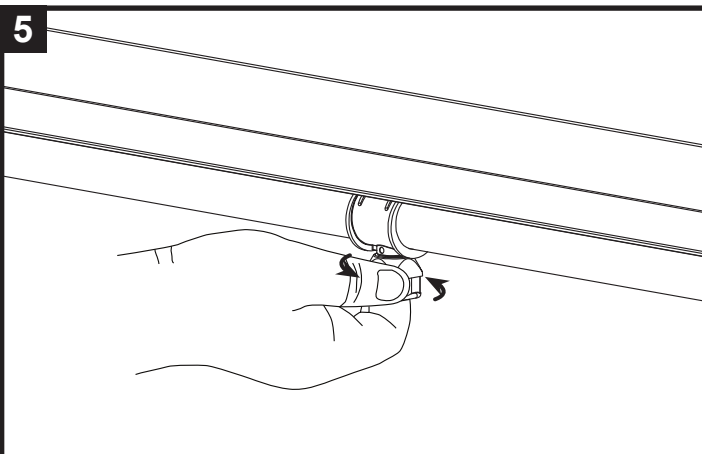
3



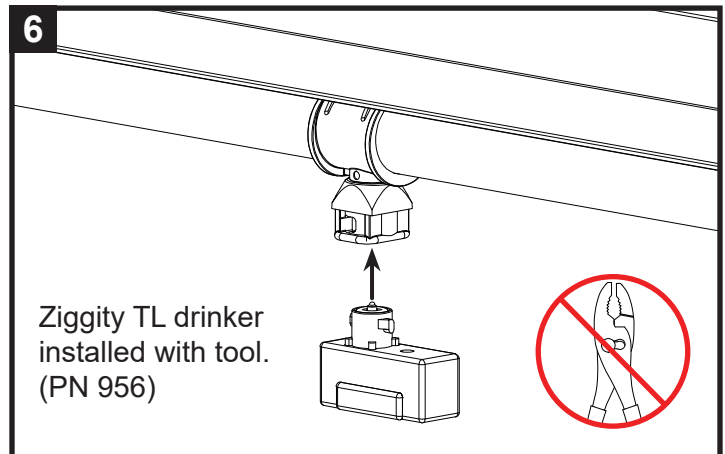
4



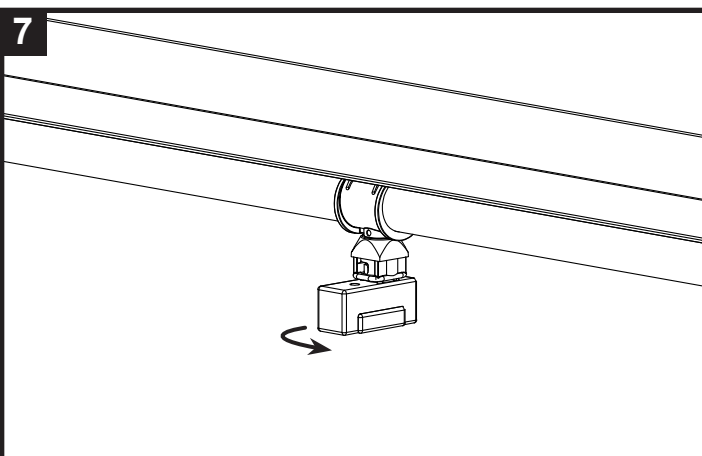
5



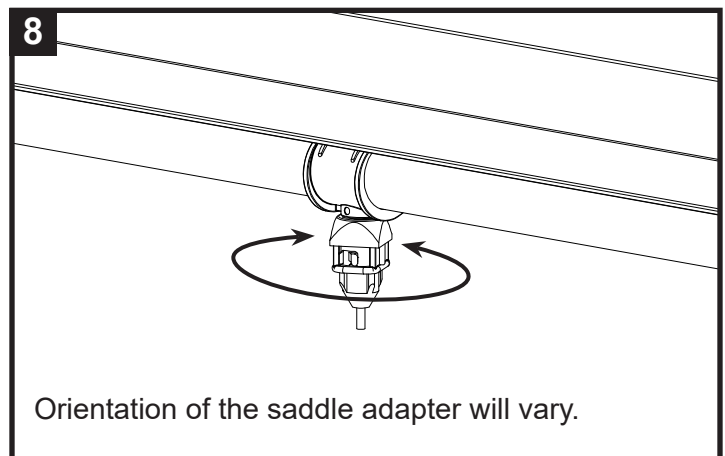
6



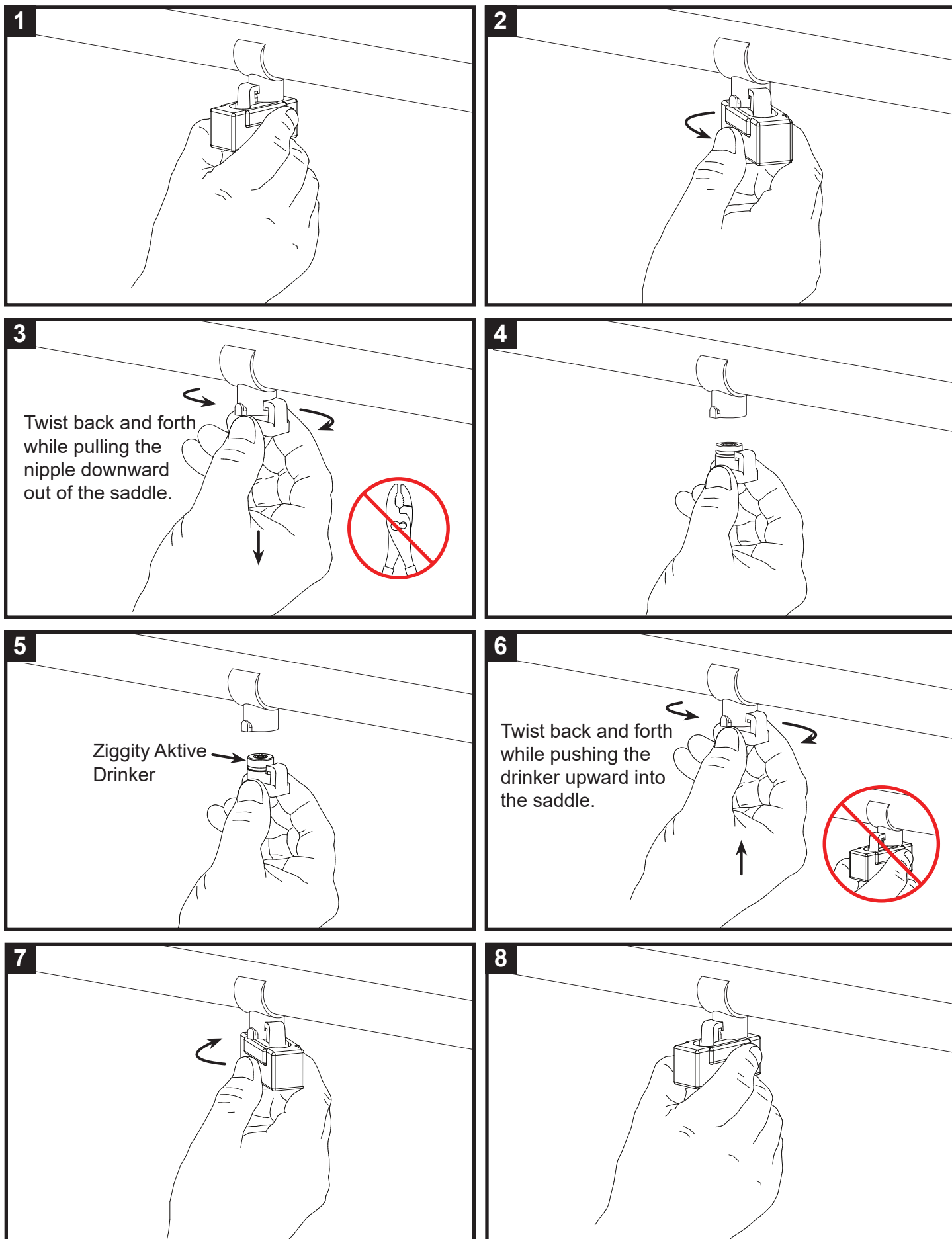
7



8

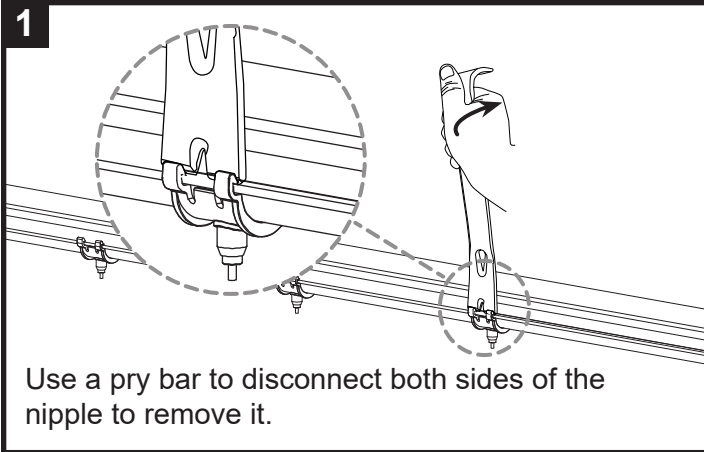


VAL-CO® / CUMBERLAND® SINGLE LOCK NIPPLE TO ZIGGITY AKTIVE DRINKER

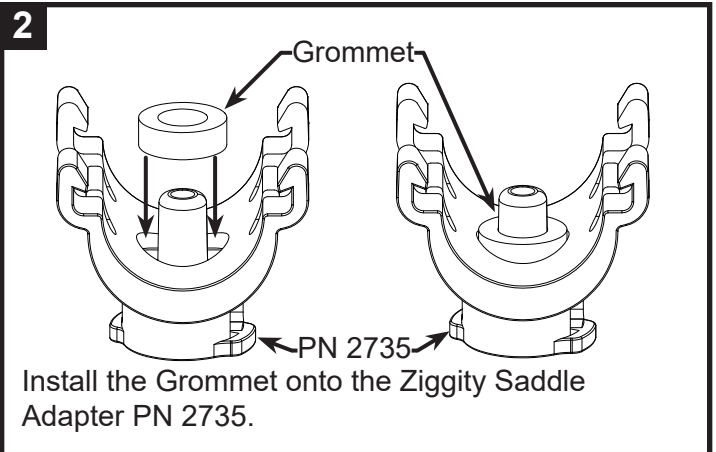


PLASSON® NIPPLE TO ZIGGITY TL DRINKER

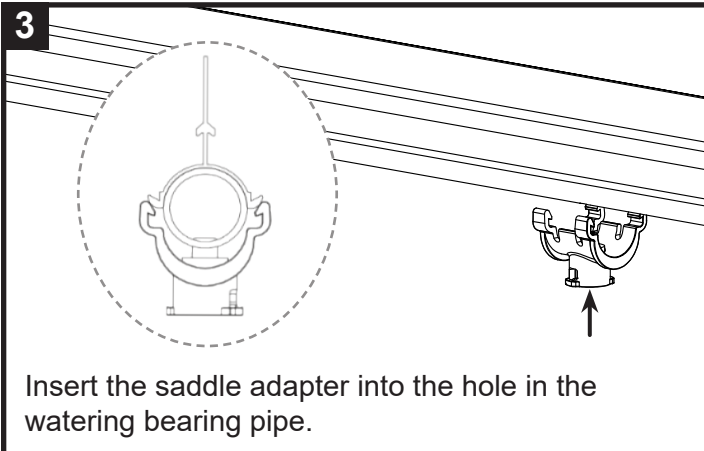
1



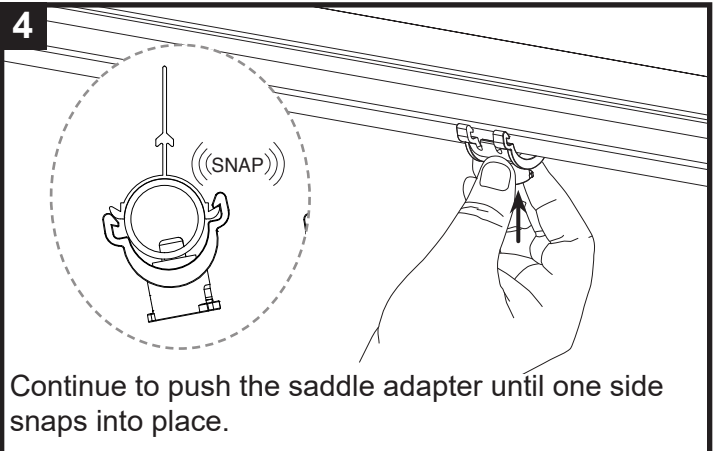
2



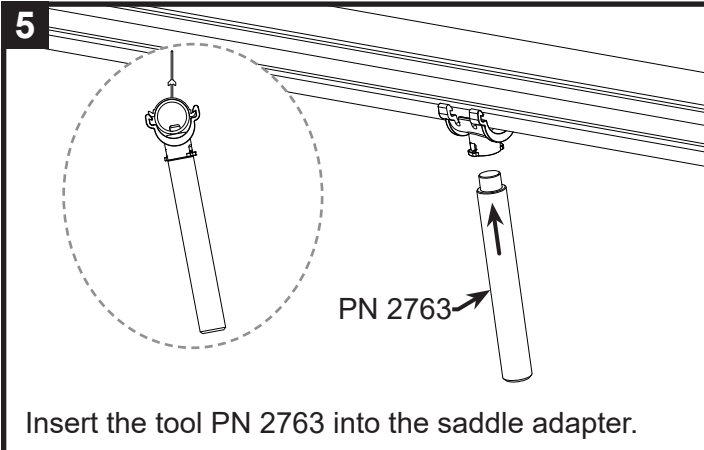
3



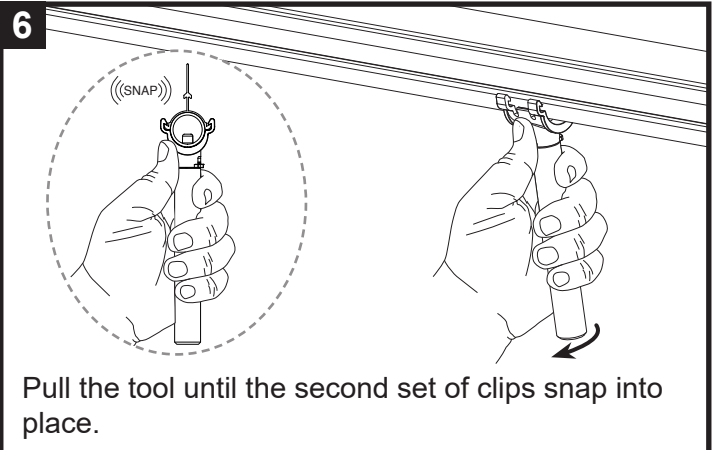
4



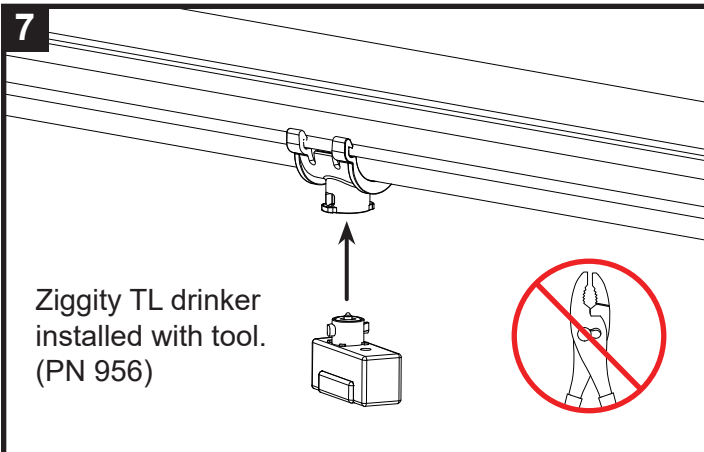
5



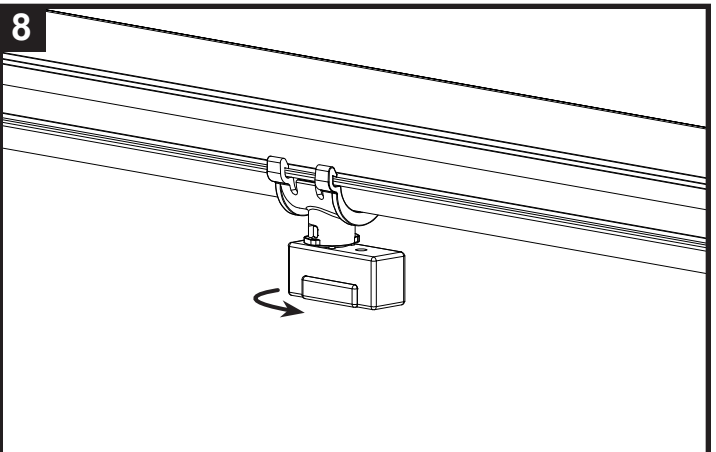
6



7

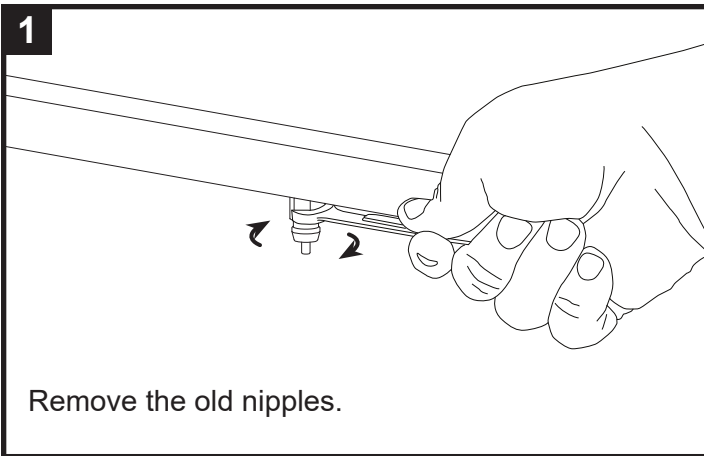


8

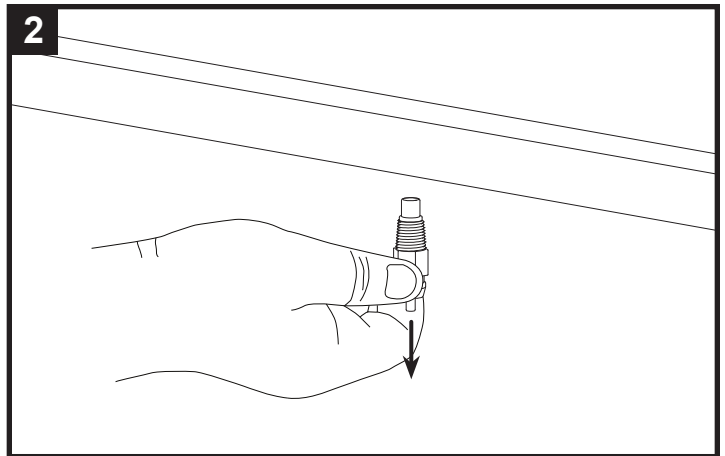


LUBING® NIPPLE ON 22 MM PIPE TO ZIGGITY TL OR BIG Z DRINKER

1

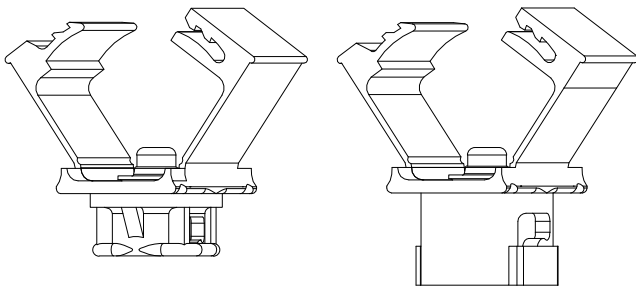


2

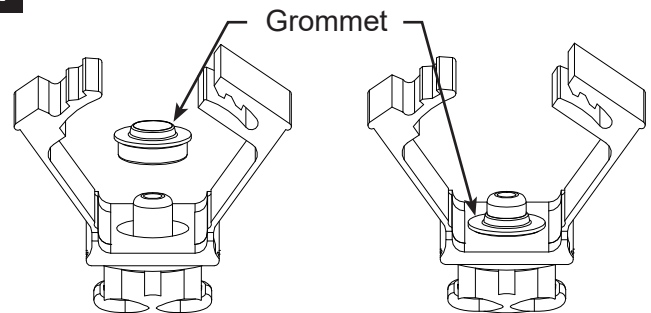


3

Clip-on saddle adapter styles

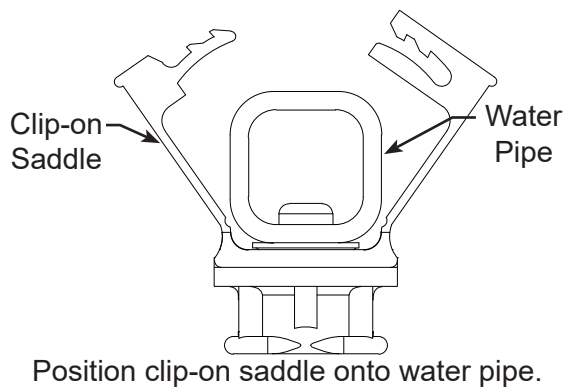


4

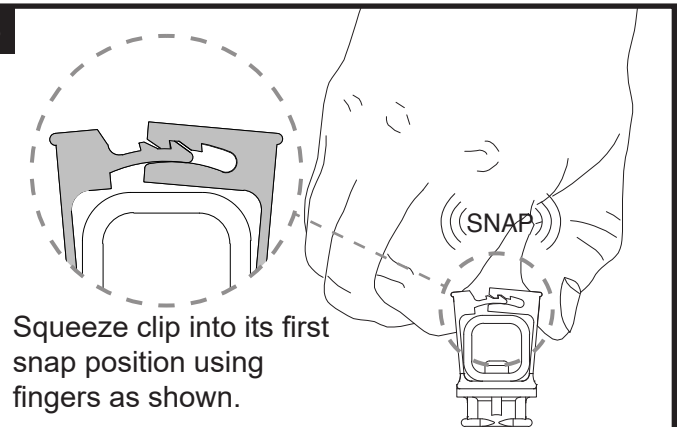


Install the grommet onto the saddle.

5

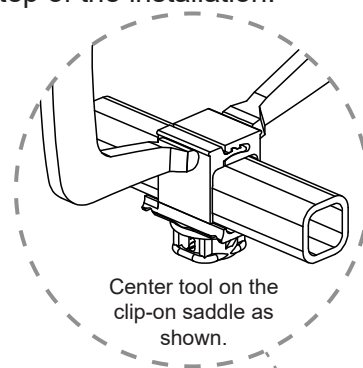
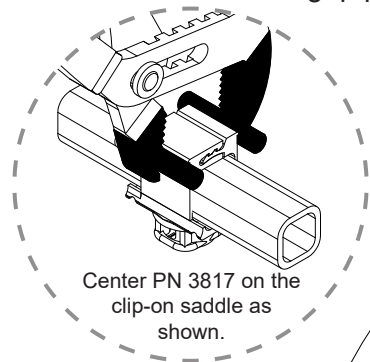


6



LUBING® NIPPLE ON 22 MM PIPE TO ZIGGITY TL OR BIG Z DRINKER

7 Use PN 3817 or vise-grip plier "11R" to complete this step of the installation.



PN 3817

Vice-Grip 11R

Use PN 3817 to squeeze the clip until the second snap is engaged.

DO NOT offset the tool to one side. This will cause damage and product to fail.

Use large vice-grip plier clamp (11R shown) to squeeze the clip until the second snap is engaged.

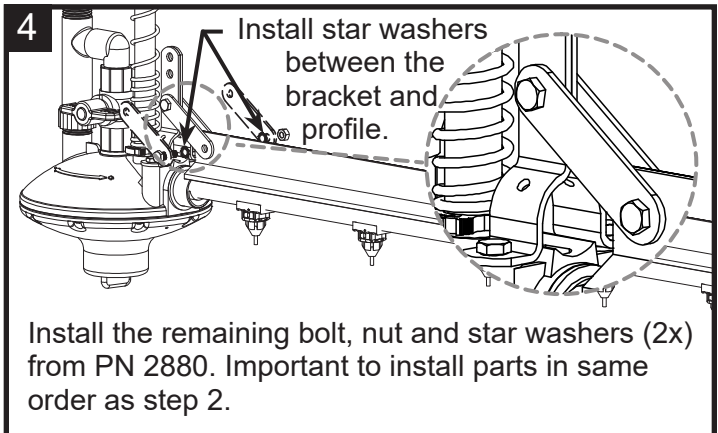
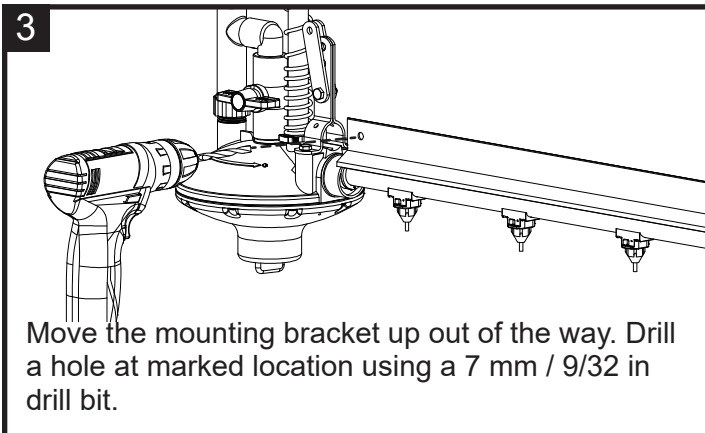
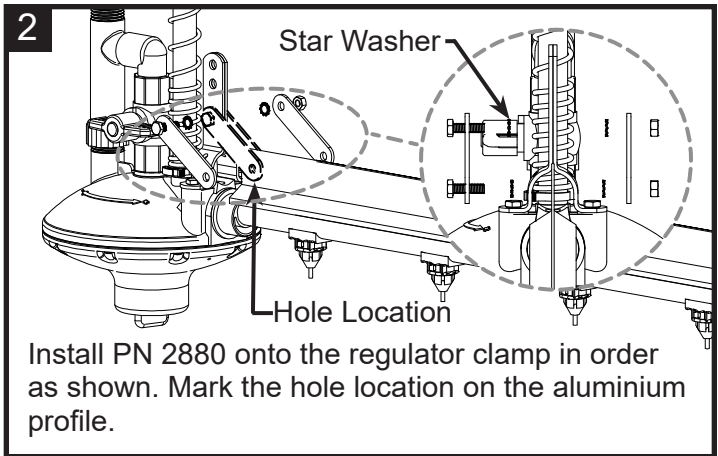
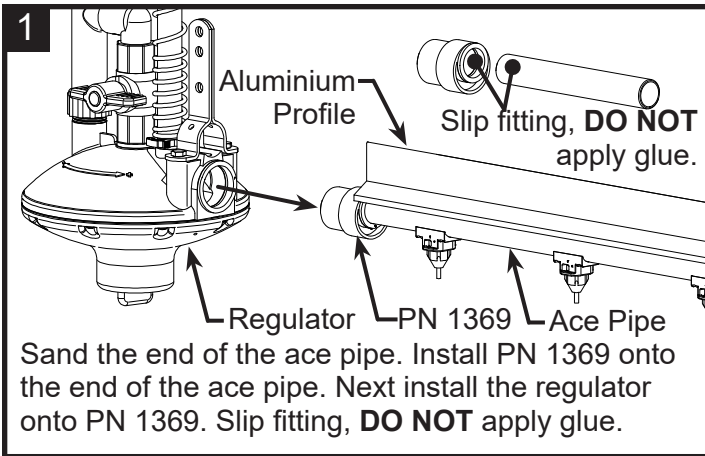
8

Ziggity TL drinker installed with tool. (PN 956)

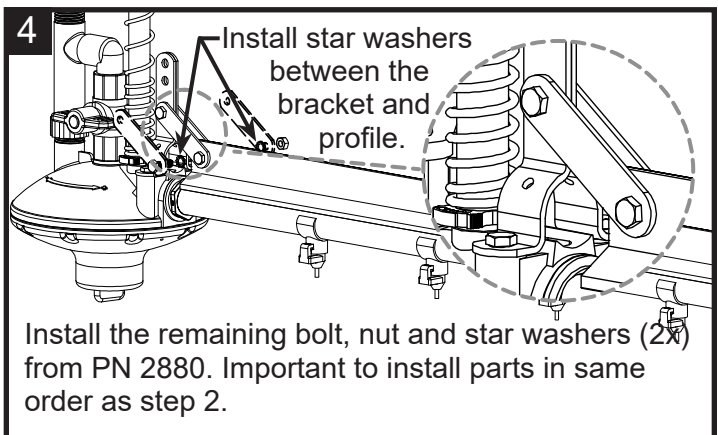
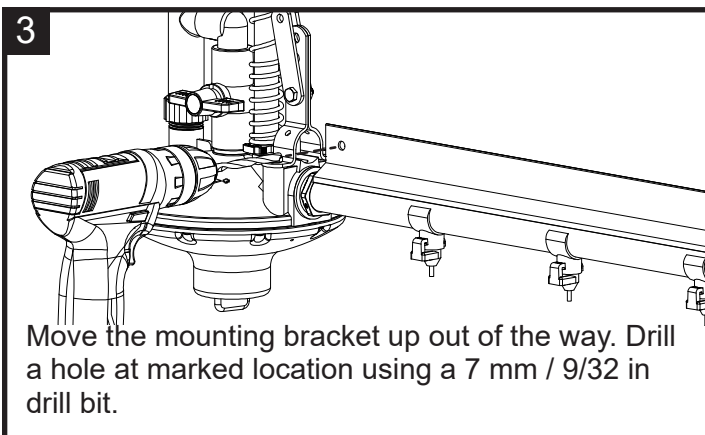
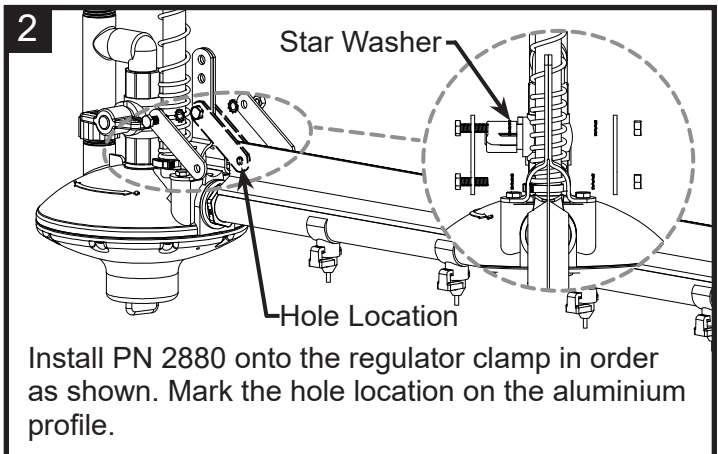
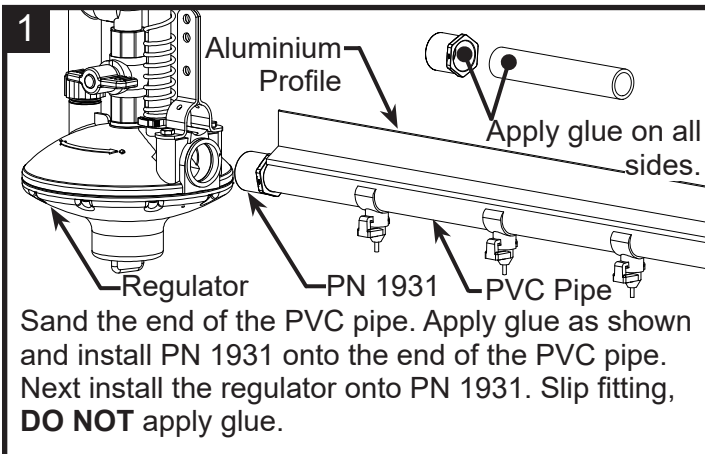
9

Floor Regulators

ZIGGITY REGULATOR TO ALUMINIUM PROFILE & ACE PIPE

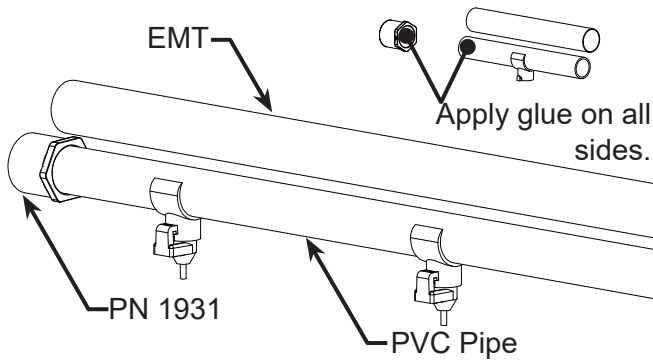


ZIGGITY REGULATOR TO ALUMINIUM PROFILE & 3/4" PVC PIPE



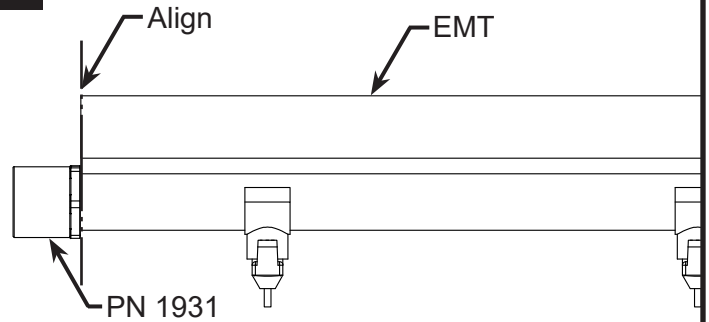
ZIGGITY REGULATOR TO VAL-CO®

1



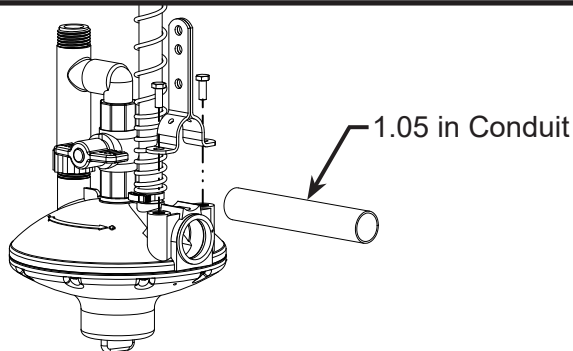
Sand the end of the PVC pipe. Apply glue as shown and install PN 1931 onto the end of the PVC pipe.

2



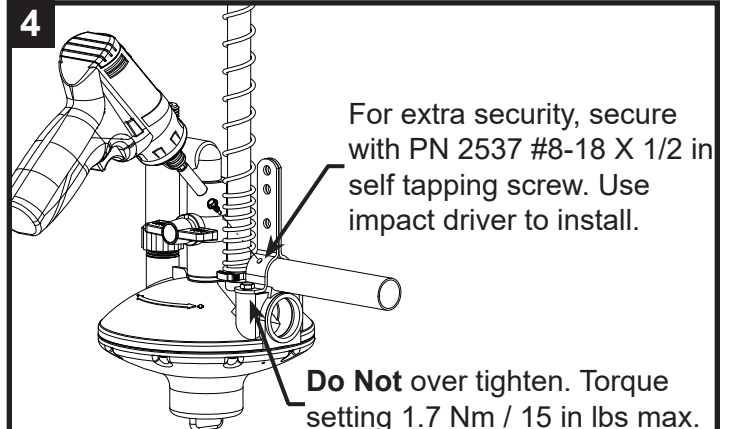
Align the EMT to the edge of the PN 1931.

3

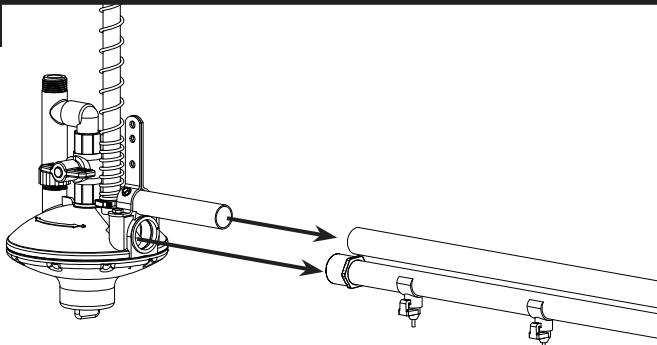


Install a 15 cm / 6 in piece of 1.05 in conduit on to the regulator.

4

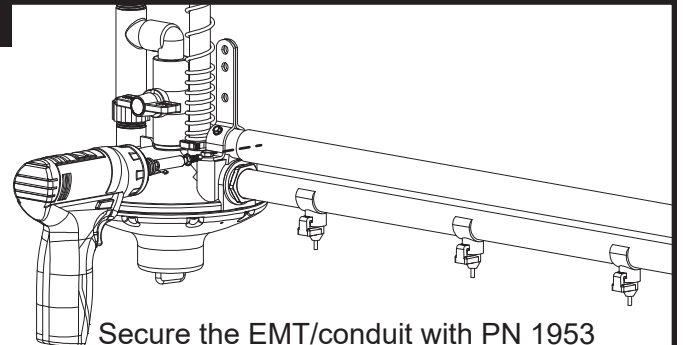


5



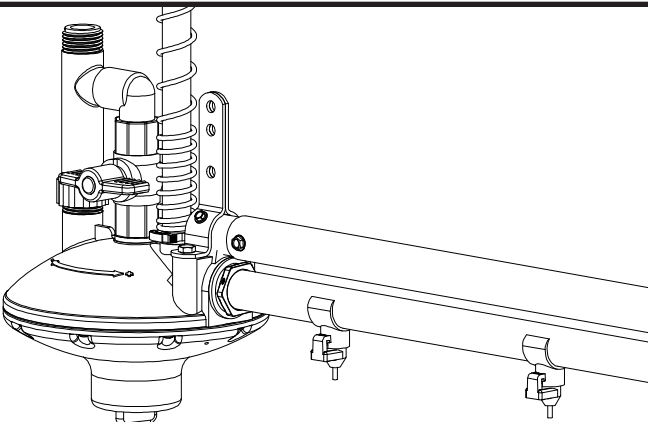
Insert the 1.05 in conduit into the EMT. Press the regulator onto the PN 1931 until it fully seats.

6

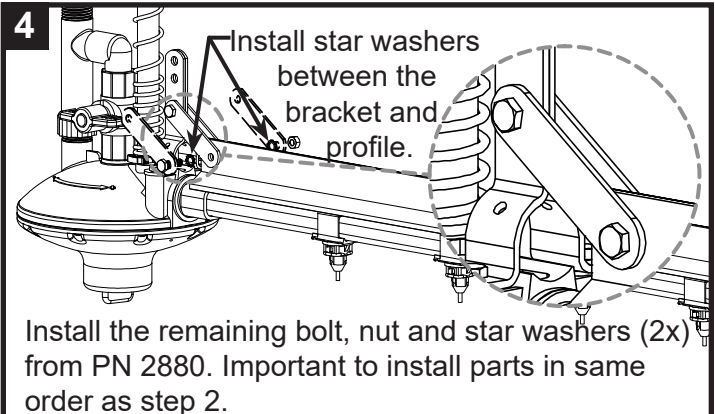
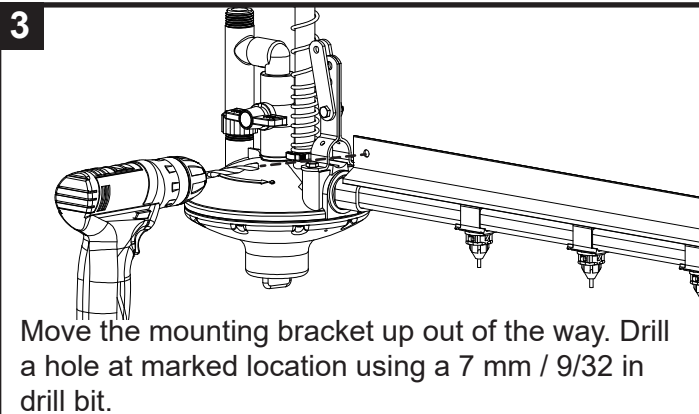
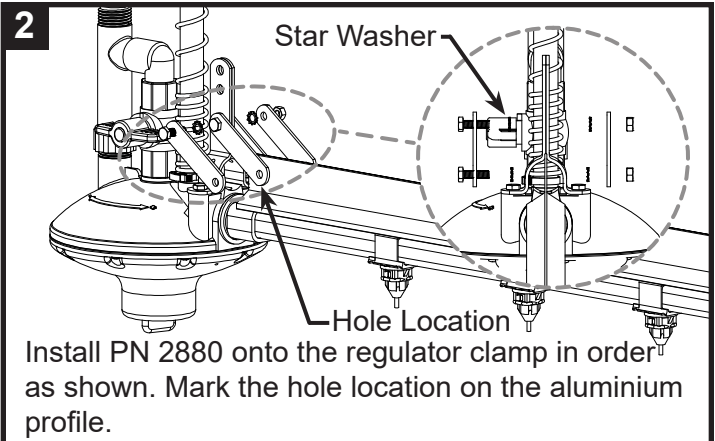
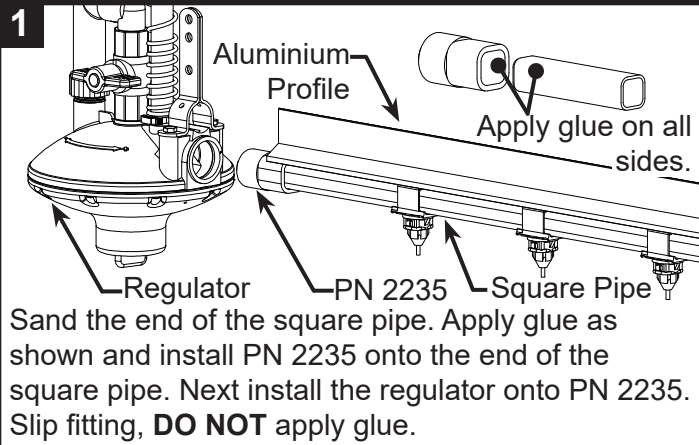


Secure the EMT/conduit with PN 1953 #12-24 X 3/4 in self tapping screw. Use impact driver to install.

7

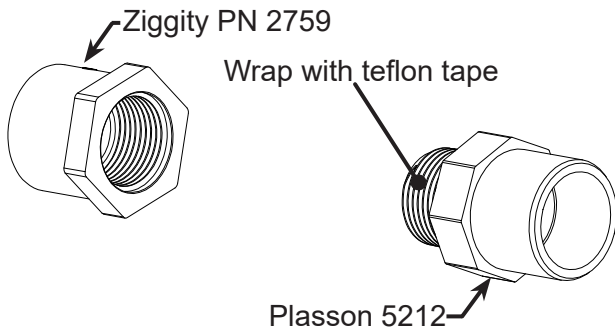


ZIGGITY REGULATOR TO ALUMINIUM PROFILE & 22 MM SQUARE PIPE



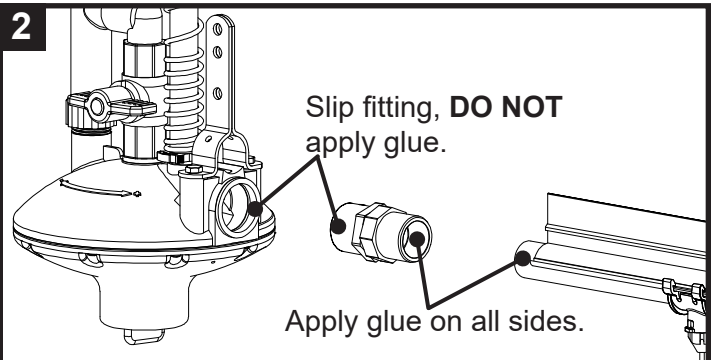
ZIGGITY REGULATOR TO PLASSON® FLOOR SYSTEM

1



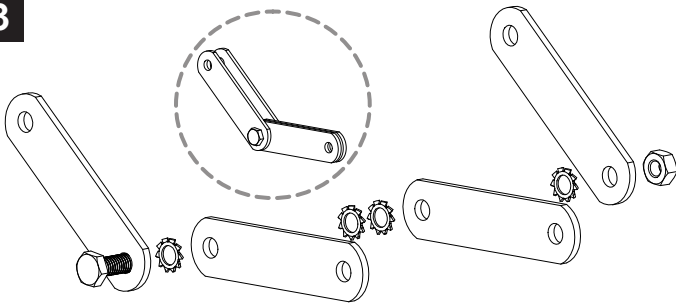
Wrap threads on Plasson 5212 Adapter - 32x25x3/4 in with teflon tape. Thread into PN 2759.

2



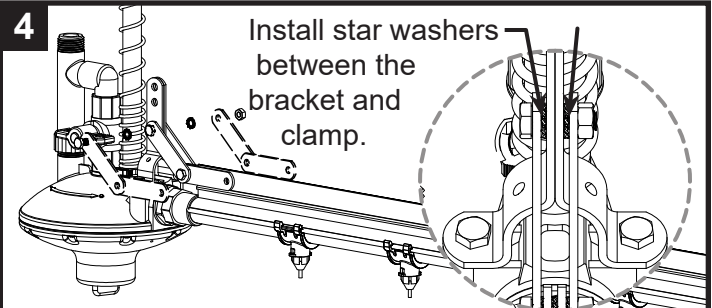
Sand the end of the pipe, apply glue as shown and install assembled adapter.

3



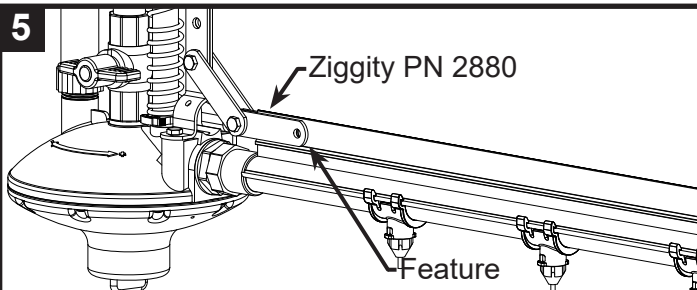
Attach PN 2880 (2x) together in order as shown. Do Not tighten. Leave loose to allow movement for future steps.

4



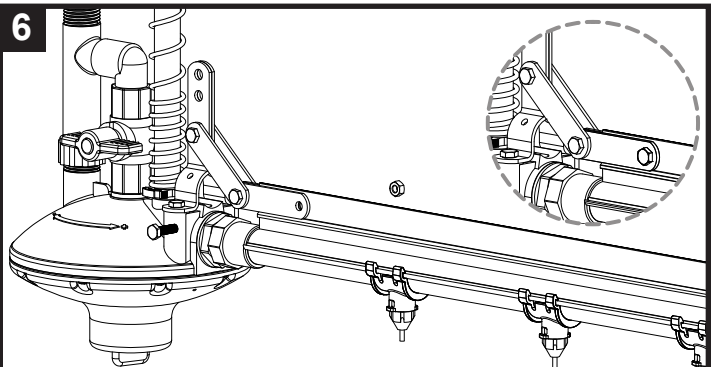
Install the bolt, nut and star washers (2x) from PN 2880. Important to install parts in same order as shown. Do Not tighten.

5



Align PN 2880 with the feature on the aluminium profile as shown. Mark the hole location on the aluminium profile. Drill a hole at marked location using a 7 mm / 9/32 in drill bit.

6

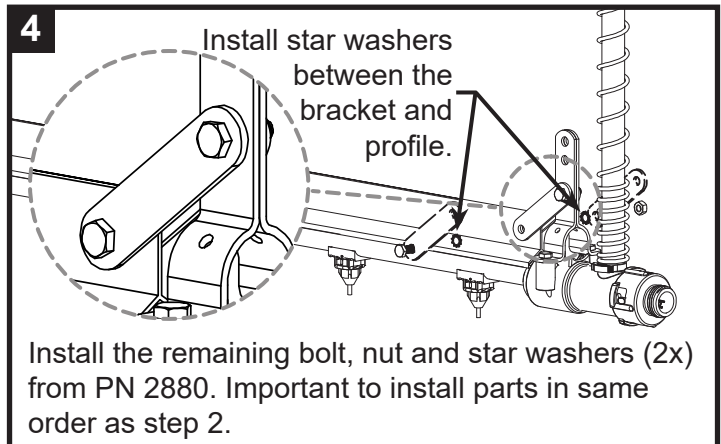
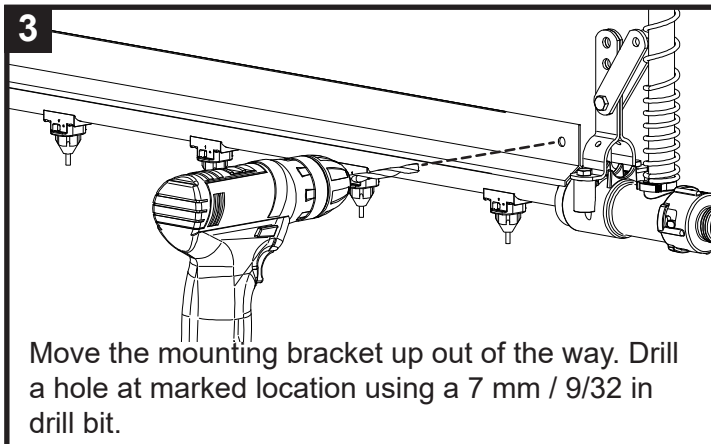
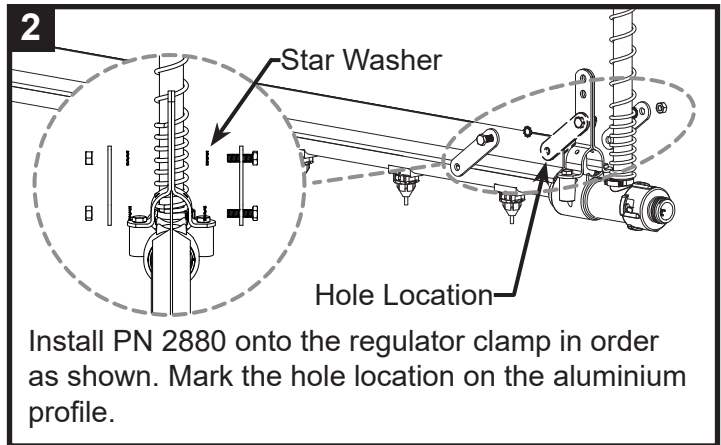
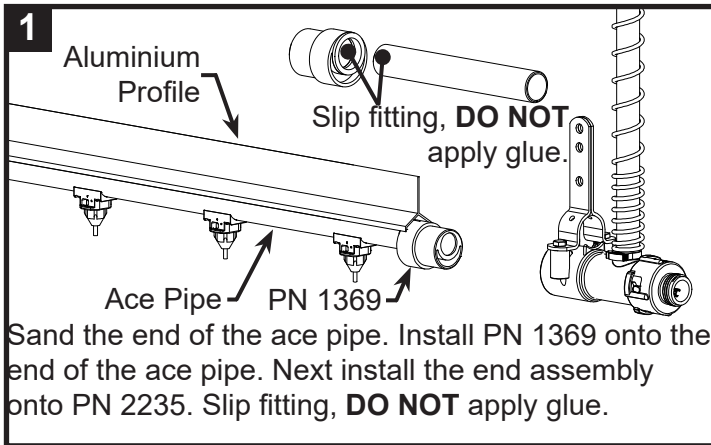


Install the remaining bolt and nut from PN 2880. Note: you will not use any star washers in this step.

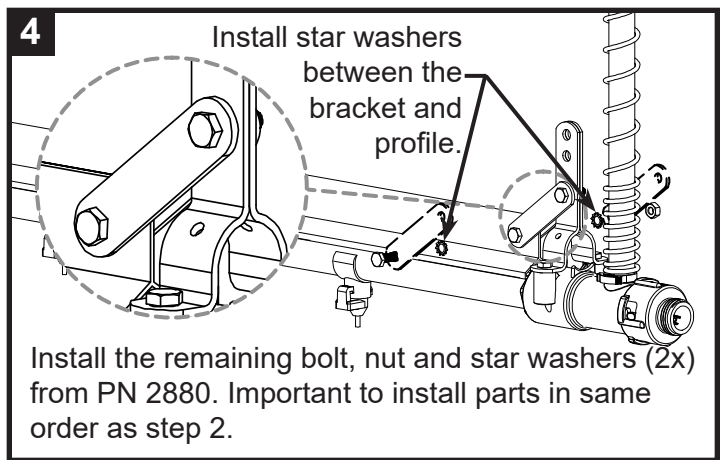
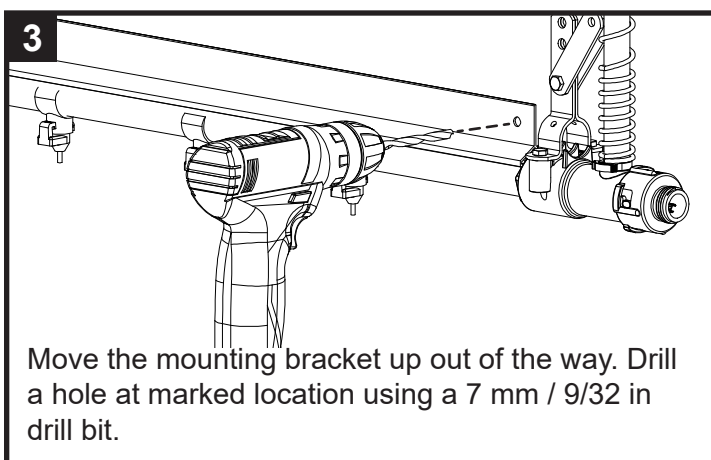
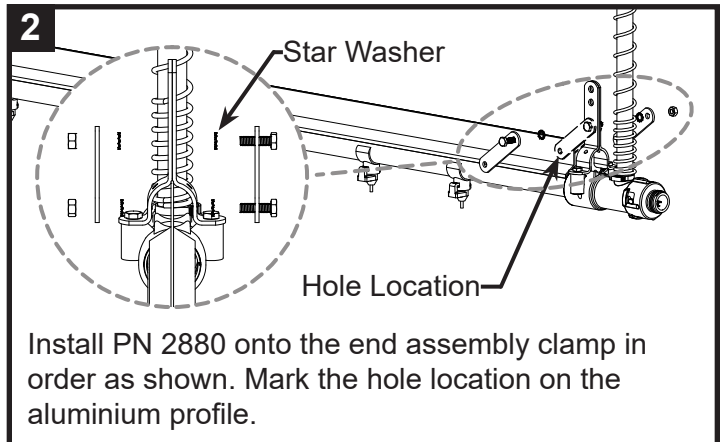
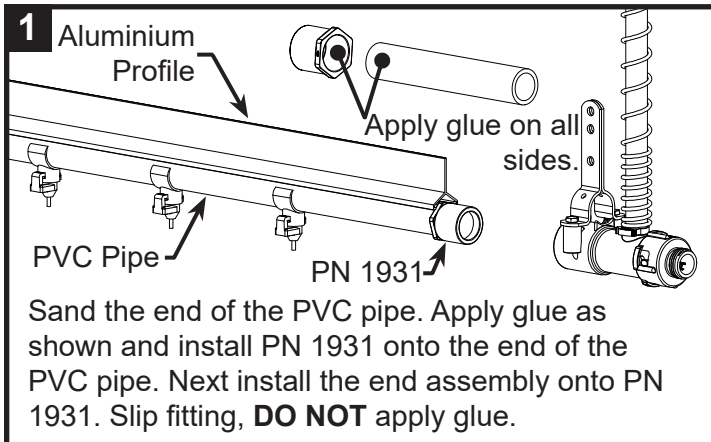
THIS PAGE INTENTIONALLY LEFT BLANK

Floor End Assemblies

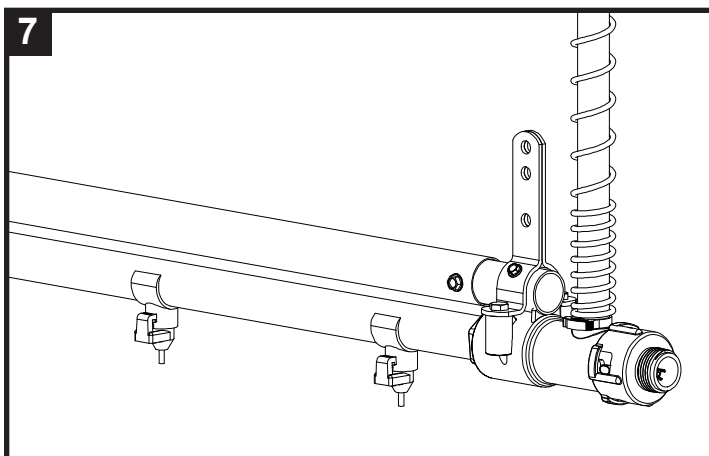
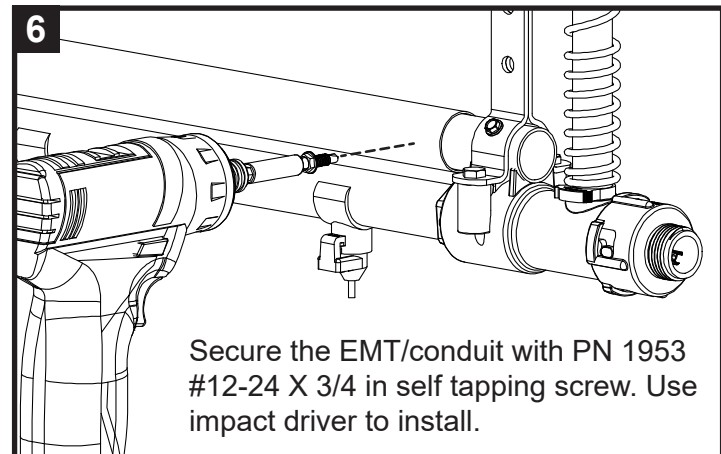
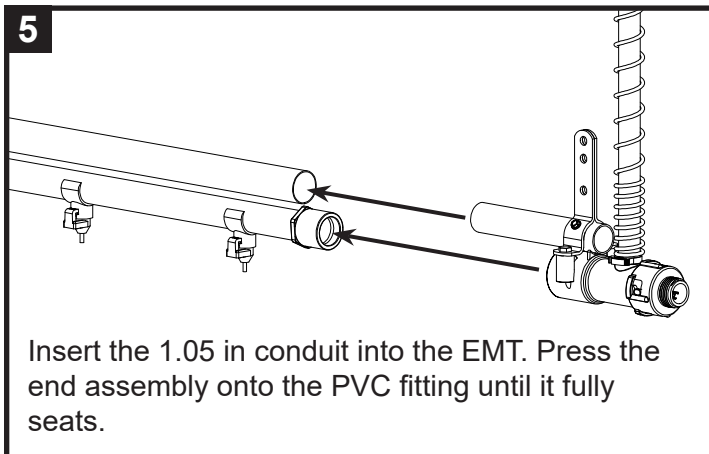
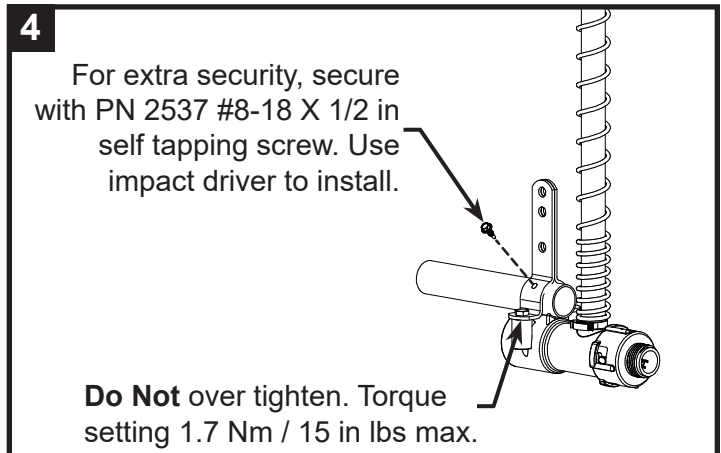
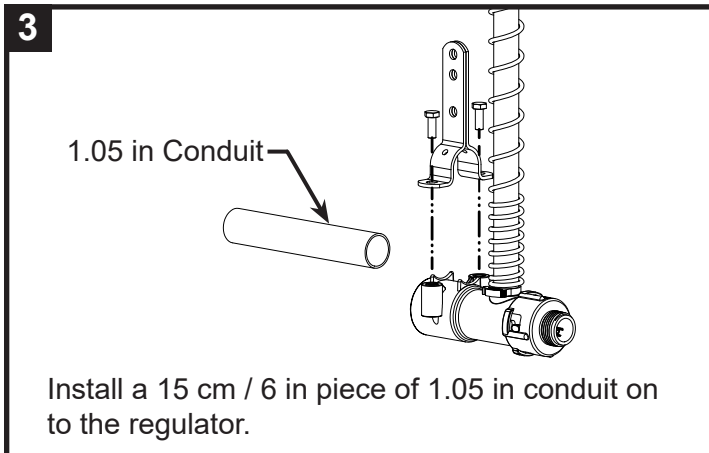
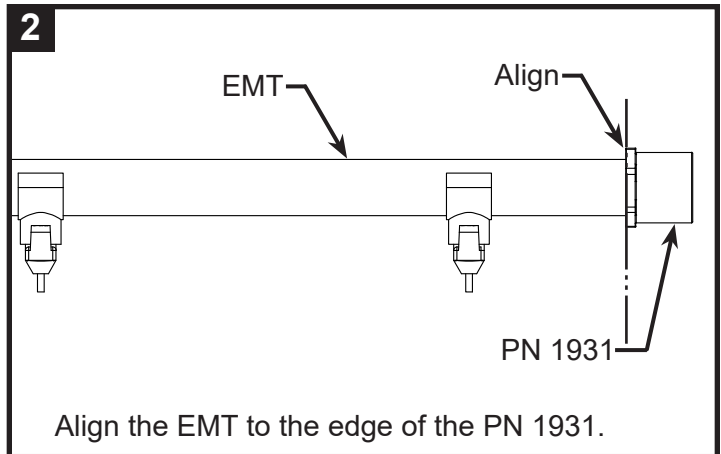
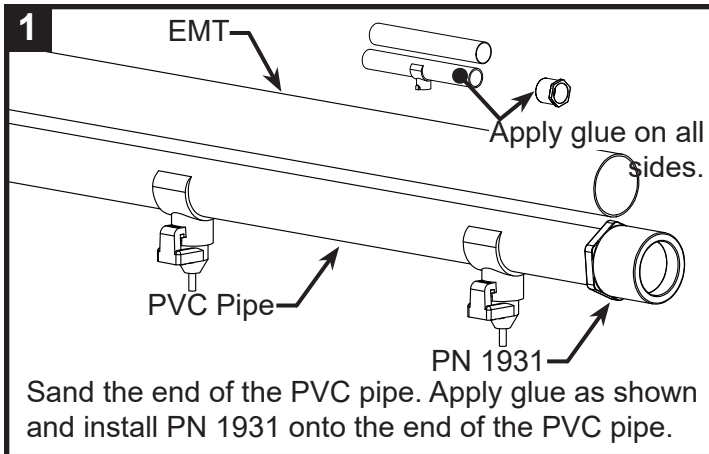
ZIGGITY END ASSEMBLY TO ALUMINIUM PROFILE & ACE PIPE



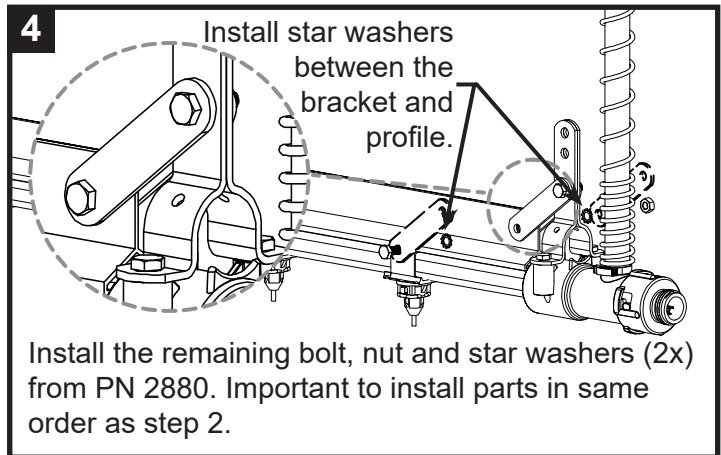
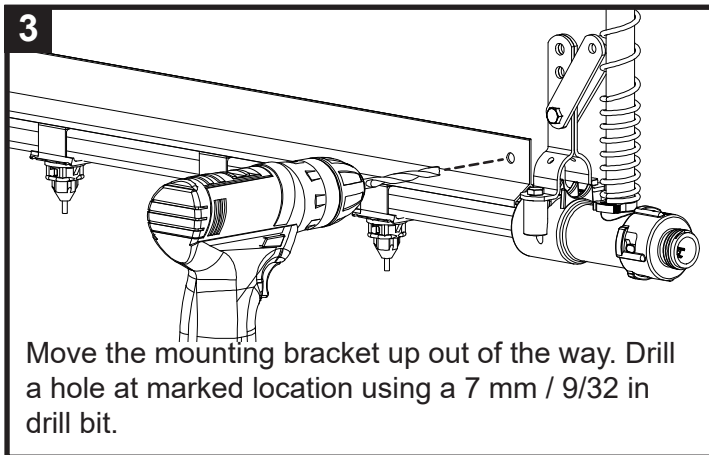
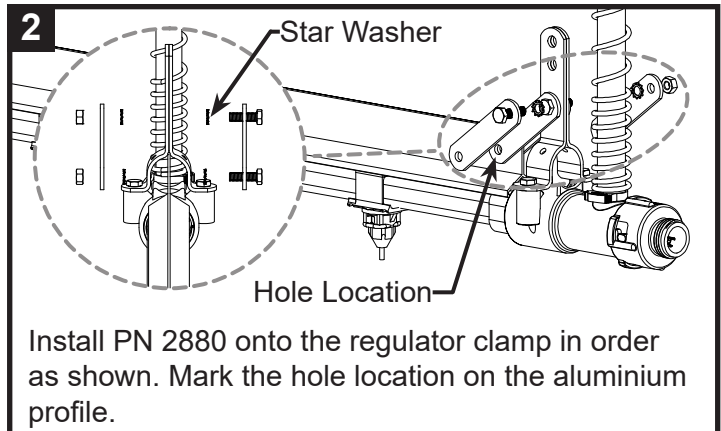
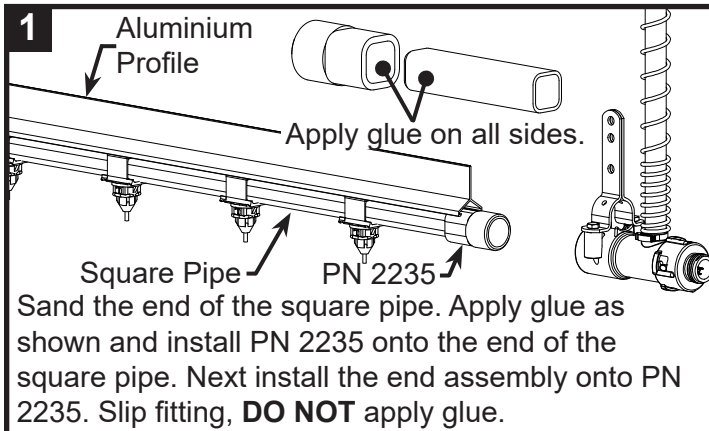
ZIGGITY END ASSEMBLY TO ALUMINUM PROFILE & 3/4" PVC PIPE



ZIGGITY END ASSEMBLY TO VAL-CO®

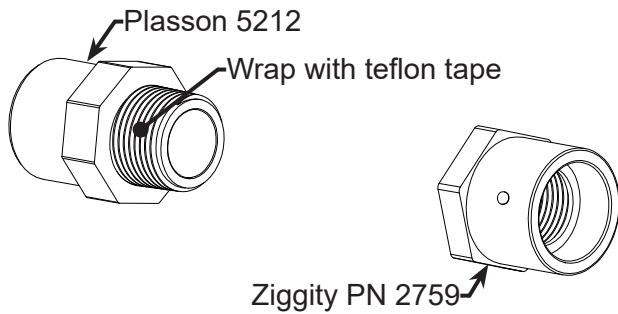


ZIGGITY END ASSEMBLY TO ALUMINIUM PROFILE & 22 MM SQUARE PIPE



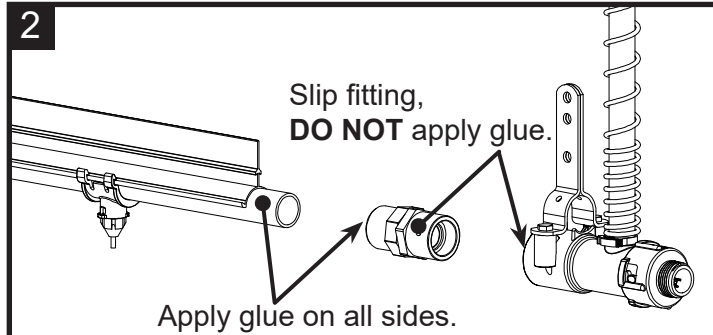
ZIGGITY END ASSEMBLY TO PLASSON® FLOOR SYSTEM

1



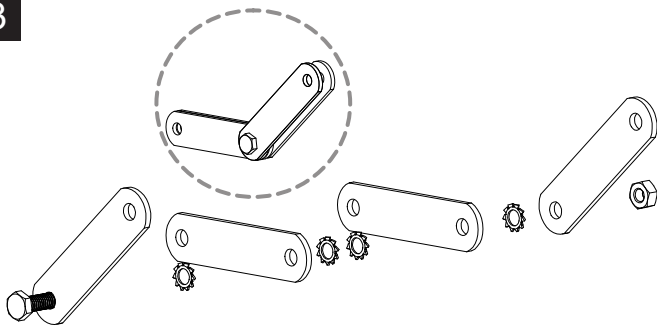
Wrap threads on Plasson 5212 Adapter - 32x25x3/4 in with teflon tape. Thread into PN 2759.

2



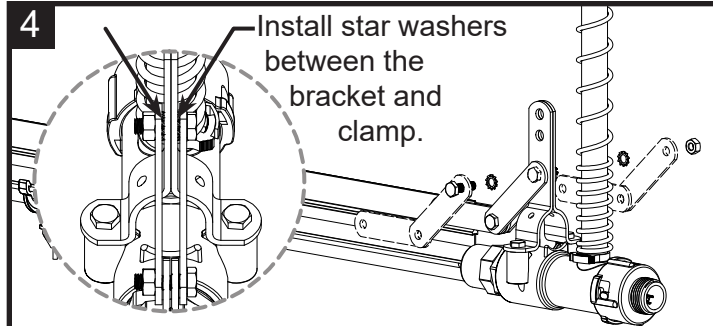
Sand the end of the pipe. Apply glue as shown and install assembled adapter.

3



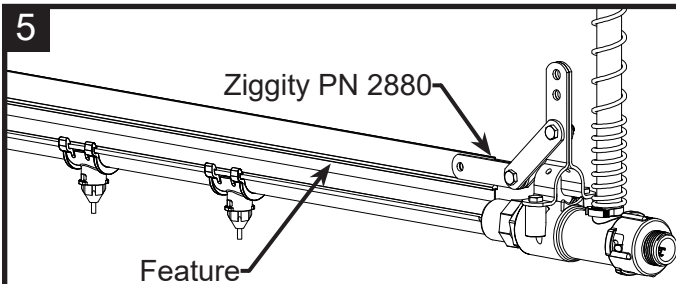
Attach PN 2880 (2x) together in order as shown. Do Not tighten. Leave loose to allow movement for future steps.

4



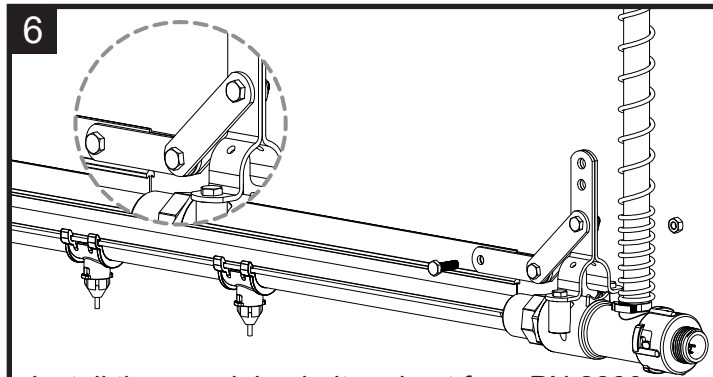
Install the bolt, nut and star washers (2x) from PN 2880. Important to install parts in same order as shown. Do Not tighten.

5



Align PN 2880 with the feature on the aluminium profile as shown. Mark the hole location on the aluminium profile. Drill a hole at marked location using a 7 mm / 9/32 in drill bit.

6



Install the remaining bolt and nut from PN 2880. Note: you will not use any star washers in this step.